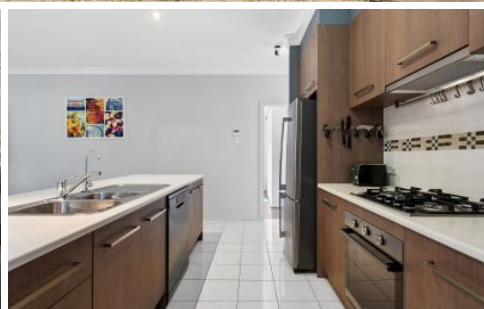


SCHINELLA.



121 Gordon Street Albert Park SA

3  2  4 

You'll love the spacious, low-maintenance living - the kids will love the park and tennis courts across the road.

This charming courtyard home has three bedrooms (main with walk-in wardrobe and ensuite, bedrooms two and three with built-in robes), a large formal lounge, kitchen overlooking open plan living and dining area and an enclosed verandah for all weather entertaining.

Set on a corner allotment of approximately 355sqm with secure, fully fence grounds, the home has a double garage (auto-door), ducted reverse-cycle air-conditioning and security system to complete this value-packed offering.

Located across from the tennis courts and playground of

[For full version visit the website](https://www.schinellaproperty.com.au)

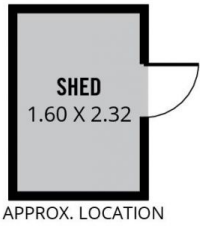
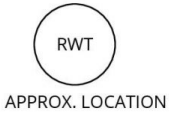
Type : House
Price : Offers Closing: 12pm Tues, 26th May
Land Size : 355 sqm
View : <https://www.schinellaproperty.com.au/8676696>



Damian Popowycz
0413 026 026

<https://www.schinellaproperty.com.au>

APPROX. LOCATION



TOTAL



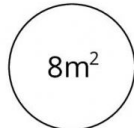
Living



Shed



Garage



Porch



Scale in metres. This drawing is for illustration purposes only. All measurements are approximate and details intended to be relied upon should be independently verified.

Produced by **The Fotobase Group**