

SCHINELLA.



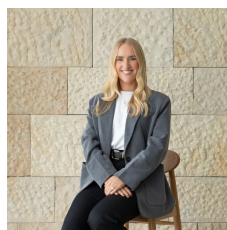
1/276 Anzac Highway Plympton SA

2 1

Nestled in a convenient and well-regarded location, this beautifully presented unit offers a superb opportunity for first home buyers, savvy investors and downsizers seeking a refined, low-maintenance lifestyle.

Type : Unit
Price : Under Contract
View : <https://www.schinellaproperty.com.au/8664983>

Positioned within a well-maintained group in the ever-popular suburb of Plympton, this ground floor unit offers the perfect balance of comfort and accessibility. Enjoy being just moments from local shops, schools and public transport, with both the Adelaide CBD and stunning coastline of Glenelg Beach less than 10 minutes away. Set within a quiet complex of just eight, the unit also benefits from established communal green spaces, adding to its relaxed and private appeal.



Renee Jackson
8294 4484



Pat Schinella
08 8294 4484

[For full version visit the website](https://www.schinellaproperty.com.au)

<https://www.schinellaproperty.com.au>



TOTAL



Living



Verandah



Scale in metres. This drawing is for illustration purposes only. All measurements are approximate and details intended to be relied upon should be independently verified. Produced by **The Fotobase Group**