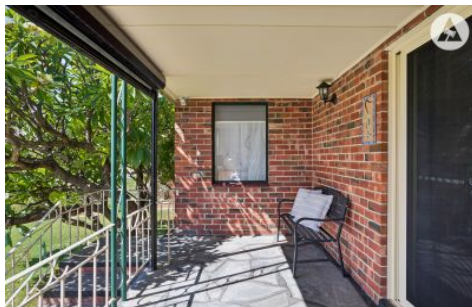


SCHINELLA.



26 Calum Grove Seacombe Heights SA

3 1 4

Perched proudly in an elevated, commanding position, this beautifully presented home captures sweeping views while enjoying the peaceful outlook of a lush oval directly opposite - a rare and enviable setting that blends lifestyle and convenience.

Behind its charming façade, the home's original footprint has been thoughtfully updated to deliver multiple living zones designed for modern living. A welcoming entrance introduces a cosy lounge complete with combustion heating - the perfect retreat for cooler evenings. Newly polished timber floors flow seamlessly throughout, complemented by high ornate ceilings that enhance the home's warmth, character, and sense of space.

Type : House
Price : Under Contract
Land Size : 700 sqm
View : <https://www.schinellaproperty.com.au/8656380>



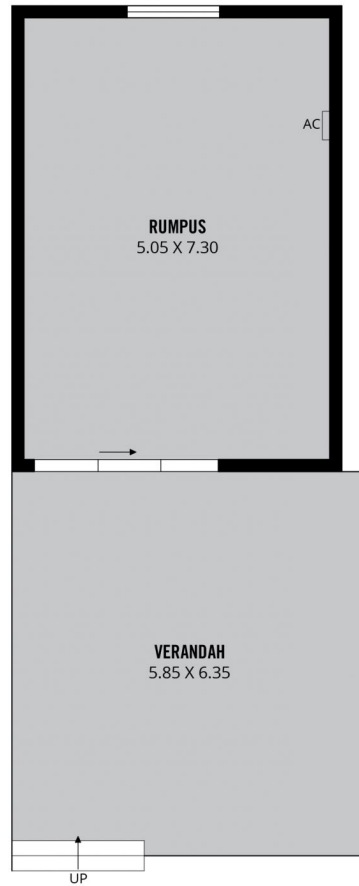
DeArna Schinella
08 8294 4484



Pat Schinella
08 8294 4484

[For full version visit the website](https://www.schinellaproperty.com.au)

<https://www.schinellaproperty.com.au>



TOTAL

Living

Verandah

Porch



Scale in metres. This drawing is for illustration purposes only. All measurements are approximate and details intended to be relied upon should be independently verified.

Produced by **The Fotobase Group**