

SCHINELLA.



43A Austral Terrace Morphettville SA

3  2  2 

Contact Agent for a list of area sales to help with offers closing campaign.

Perfectly positioned in a highly sought-after pocket with easy access to Adelaide's stunning coastline and vibrant seaside entertainment hubs, this valuable Torrens Title residence delivers on single-level living tailored to modern lifestyles.

Behind its attractive rendered façade, the home reveals a thoughtful floorplan designed with versatility in mind - offering two separate living zones; a welcoming front lounge complemented by a light-filled open-plan living and dining area that forms the heart of the home.

Type : House
Price : \$ 950,000
Land Size : 284 sqm
View : <https://www.schinellaproperty.com.au/8637047>



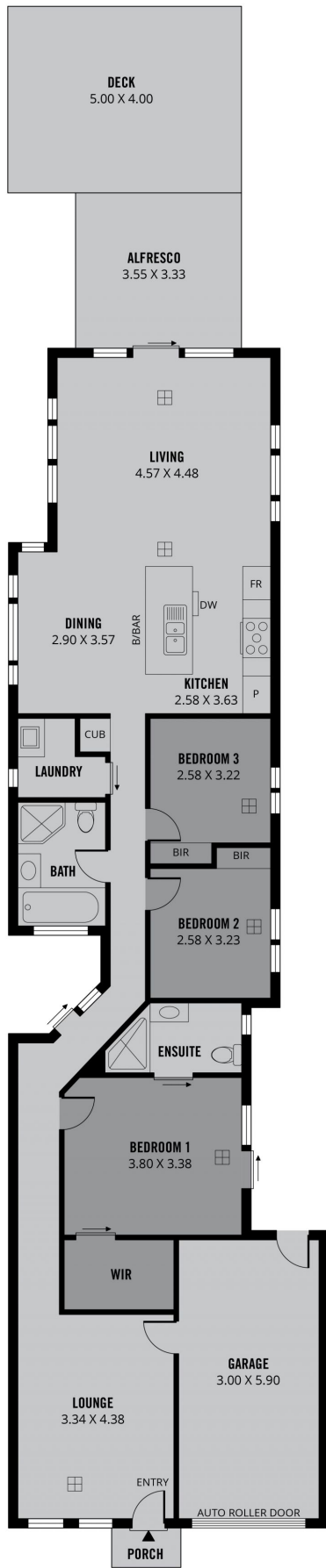
Pat Schinella
08 8294 4484



DeArna Schinella
08 8294 4484

[For full version visit the website](https://www.schinellaproperty.com.au)

<https://www.schinellaproperty.com.au>



176m²

TOTAL

123m²

Living

20m²

Deck

20m²

Garage

1m²

Porch

12m²

Alfresco



Scale in metres. This drawing is for illustration purposes only. All measurements are approximate and details intended to be relied upon should be independently verified.

Produced by **The Fotobase Group**