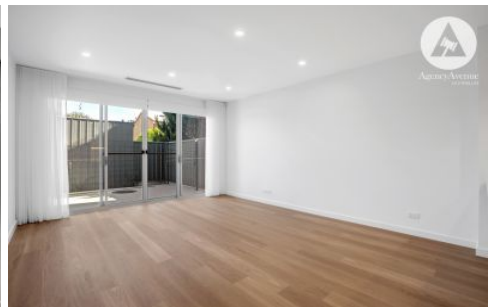


SCHINELLA.



10a Pickering Street Brompton SA

3  2  2 

Pre-selection is required for this property please send an application via www.tenantoptions.com.au to be considered and we will contact you for a private viewing

This luxury townhouse is certainly not your typical build at all - it has been fitted out with luxury fittings and quality features throughout that you just don't find in properties these days.

Perfect for City Commuters this property is situated in the ever popular suburb of Brompton which is within walking distance to the free Tram, the CBD and Plant 4 - offering you the enviable cosmopolitan lifestyle that everyone is looking for.

Type : Townhouse

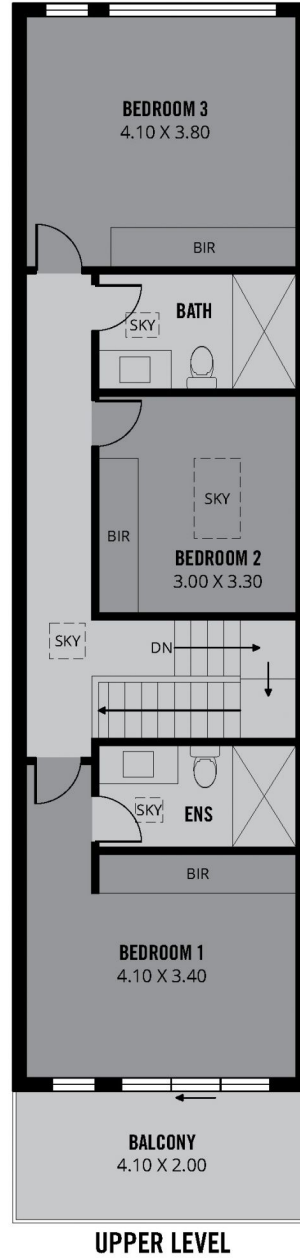
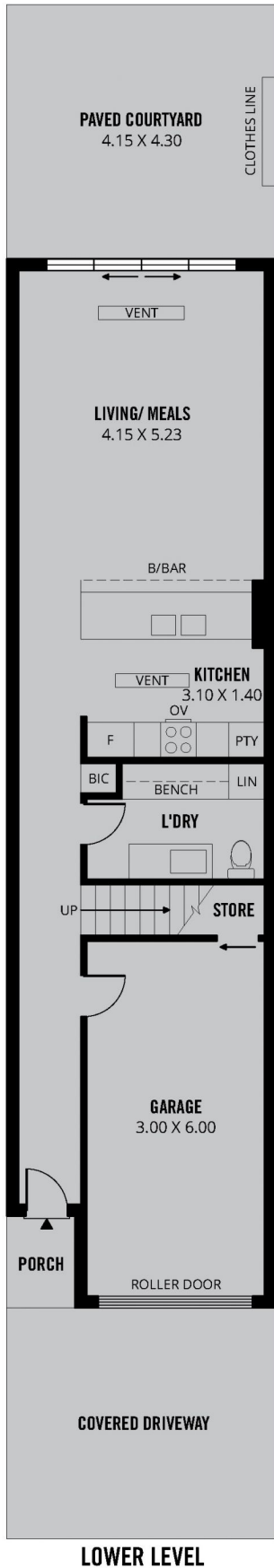
View : <https://www.schinellaproperty.com.au/8566096>



Amanda Malius (Bebbington)
(08) 8294 4484

[For full version visit the website](https://www.schinellaproperty.com.au)

<https://www.schinellaproperty.com.au>



181m²

TOTAL

133m²

Living

20m²

Garage

8m²

Balcony

18m²

Paved
Courtyard

2m²

Porch

Scale in metres. This drawing is for illustration purposes only. All measurements are approximate and details intended to be relied upon should be independently verified.

Produced by **The Fotobase Group**