

SCHINELLA.



30 Selth Street Albert Park SA

3  2  2 

Blending a charming element of past character with modern design, this 2017 Torrens Titled courtyard home delivers all of today's creature comforts within a spacious, stylish, and low-maintenance package.

Perfectly suited to a young couple or small family seeking a first home to grow into, up-sizers looking for more space and thoughtful extras, or downsizers trading an older, high-maintenance home without compromising on storage, outdoor living, or a touch of character.

Key Features:

- ?2017 quality build on a 348 sqm allotment with 6.6kw Solar system to save on rising energy bills.
- ?Featuring the original 1920s Baltic pine flooring, carefully

Type : House
Land Size : 348 sqm
View : <https://www.schinellaproperty.com.au/8528604>



Mladen Djuric
0432259123



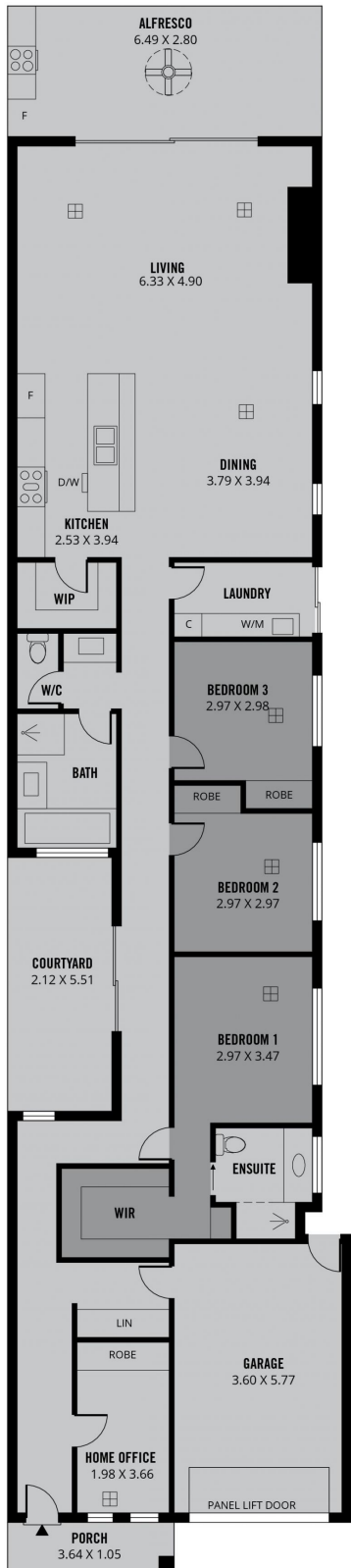
Damian Popowycz
0413 026 026

[For full version visit the website](https://www.schinellaproperty.com.au)

<https://www.schinellaproperty.com.au>

SHED
0.76 X 1.50

WT



227m²

TOTAL

169m²

Living

1m²

Shed

23m²

Garage

4m²

Porch

30m²

Courtyard/
Alfresco



Scale in metres. This drawing is for illustration purposes only. All measurements are approximate and details intended to be relied upon should be independently verified.

Produced by The Fotobase Group