

SCHINELLA.



77a Maple Avenue Royal Park SA

3 2 2

Perfectly positioned in the sought-after suburb of Royal Park, this immaculate courtyard home delivers stylish low-maintenance living with all the modern comforts. Appointed with luxurious fixtures and fittings it is a home that will appeal to the most discerning of buyers.

Offering three well-appointed bedrooms, the master features a walk-in robe and private ensuite, while bedrooms two and three include built-in robes. A central family bathroom services the home with ease. Designed for flexibility and family living, a second living space provides the perfect retreat for a home office, media room, or kids' play area.

The sleek kitchen is equipped with stone benchtops, quality appliances including a dishwasher and features a large butler's pantry with sink. The kitchen overlooks the large

Type : House
Price : \$ 962,000
Land Size : 286 sqm
View : <https://www.schinellaproperty.com.au/8493600>



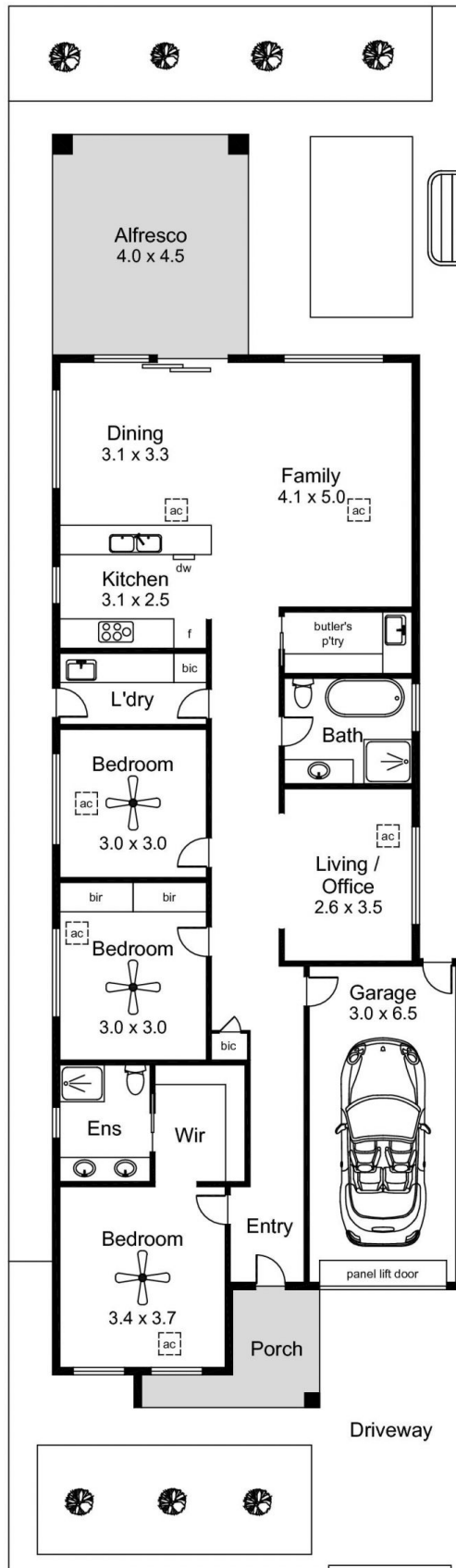
Damian Popowycz
0413 026 026



Mladen Djuric
0432259123

[For full version visit the website](https://www.schinellaproperty.com.au)

<https://www.schinellaproperty.com.au>



Area (Estimate only)	
Living	132.5 m ²
Garage	19.3 m ²
Alfresco	18.0 m ²
Porch	5.6 m ²
Total	175.4 m²



For illustrative purposes only.
All measurements are approximate