

SCHINELLA.



3/20 Dodd Place Ingle Farm SA

1  1  1 

This is the perfect opportunity for first home buyers looking to step onto the property ladder, astute investors seeking a strong 6% gross approx rent return, or downsizers for easy-care living.

Situated in a highly sought-after pocket, this single-level unit offers unbeatable convenience, just moments from sporting facilities, parks, playgrounds, public transport, Ingle Farm Plaza and the bustling Westfield Tea Tree. Nestled in a quiet cul-de-sac and set behind an electronic gate, the unit enjoys peace, privacy, and security, while overlooking beautifully maintained communal gardens.

Inside, the home has been thoughtfully updated to create a modern, open-plan living space that makes the most of

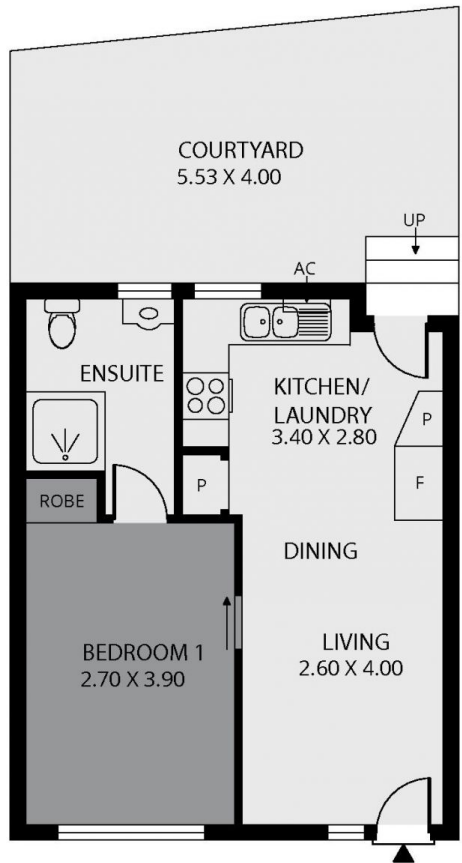
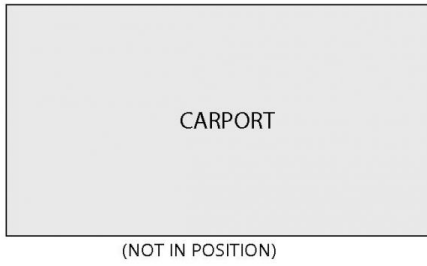
Type : Unit
Price : \$ 417,000
View : <https://www.schinellaproperty.com.au/8480113>



DeArna Schinella
08 8294 4484

[For full version visit the website](https://www.schinellaproperty.com.au)

<https://www.schinellaproperty.com.au>



77m²

TOTAL

Scale in metres. This drawing is for illustration purposes only. All measurements are approximate and details intended to be relied upon should be independently verified.

Produced by **The Fotobase Group**