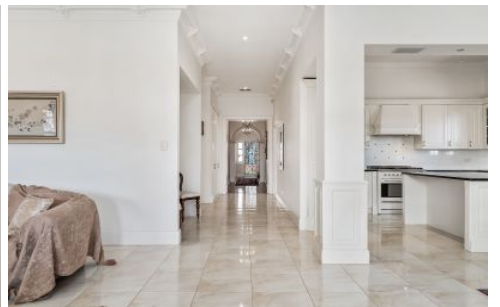


# SCHINELLA.



24 Victoria Street Prospect SA

4  2  4 

Set in a picturesque, wide tree-lined street, just moments from the cosmopolitan café strip of Prospect Road, this stunning Tudor residence blends timeless character with modern family living.

This stone-fronted classic has an imposing street presence, sitting securely behind impressive wrought-iron fencing.

The home opens with a grand central hallway, polished timber floors, soaring ceilings, ornate cornices and elegant ceiling roses. There are four bedrooms in total, the master suite includes a walk-in robe and ensuite, while three additional bedrooms provide space for the growing family.

A formal lounge, complete with a glazed brick fireplace, offers warmth and sophistication and provides that sought after second living space crucial for comfortable family living.

**Type** : House  
**Price** : \$ 2,000,000  
**Land Size** : 702 sqm  
**View** : <https://www.schinellaproperty.com.au/8456690>



**Damian Popowycz**  
0413 026 026



**Mladen Djuric**  
0432259123

[For full version visit the website](https://www.schinellaproperty.com.au)

<https://www.schinellaproperty.com.au>



24 VICTORIA STREET, PROSPECT



INTERNAL - 207.5 SQM  
EXTERNAL - 118.8 SQM  
TOTAL - 326.3 SQM