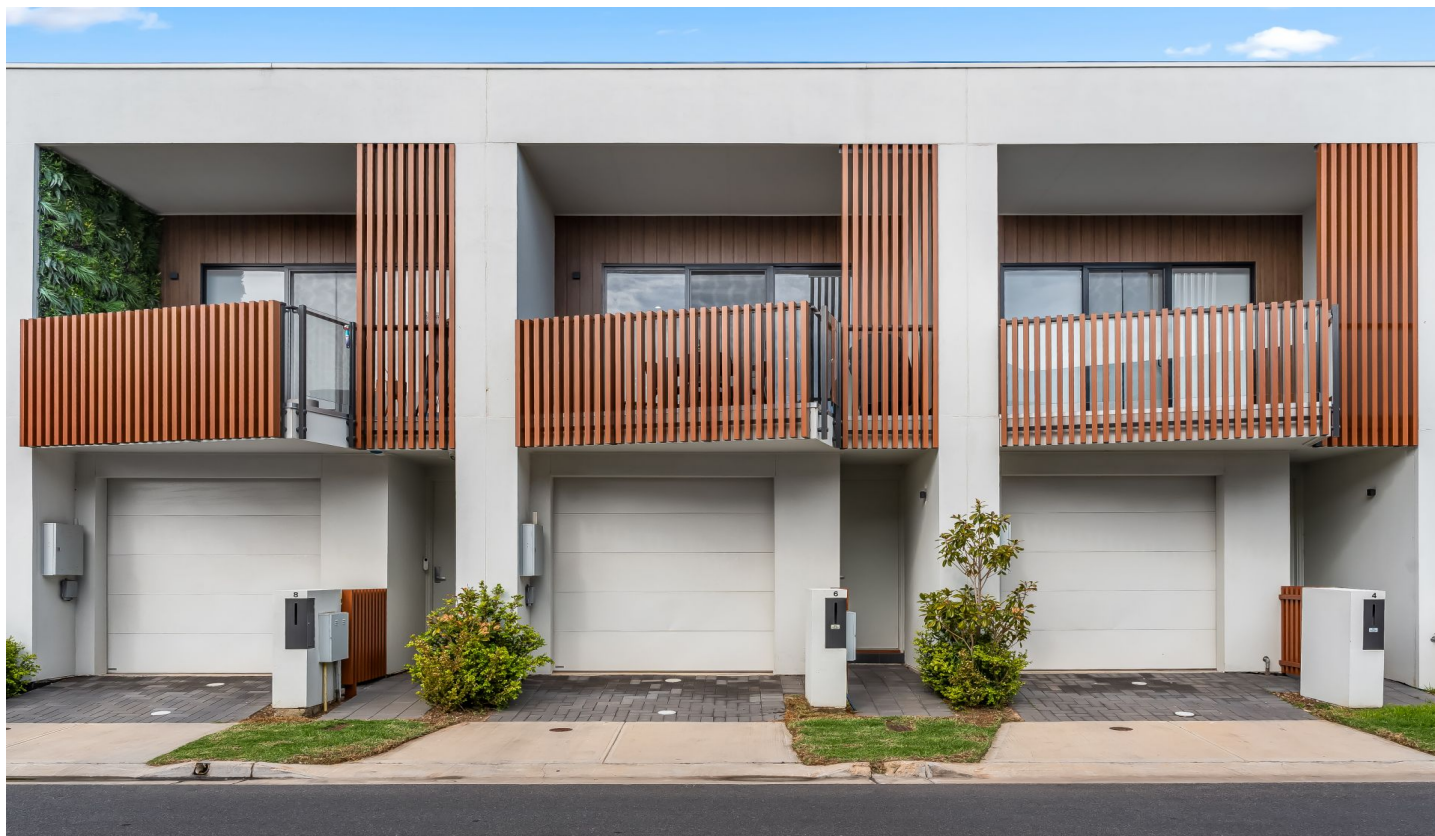


# SCHINELLA.



## 6 Edith Street Findon SA

2 2 2

Stylish, low-maintenance and superbly located-this contemporary two-bedroom torrens-titled townhouse offers the perfect blend of convenience and modern living.

Well designed with a sun-filled open-plan kitchen, dining and living space that flows effortlessly to an entertainer's balcony-ideal for weekend drinks or relaxed evening meals. The sleek kitchen is well-appointed with quality appliances including dishwasher, and the clever floorplan provides excellent separation between the living area and bedrooms.

The main bedroom features a built-in robe and ensuite, while bedroom two includes a walk-in robe and is serviced by the second bathroom. Comfort is assured with ducted reverse-cycle air conditioning throughout, and there is secure parking with a garage with auto-door.

**Type** : House

**Price** : \$ 710,000

**View** : <https://www.schinellaproperty.com.au/8446698>



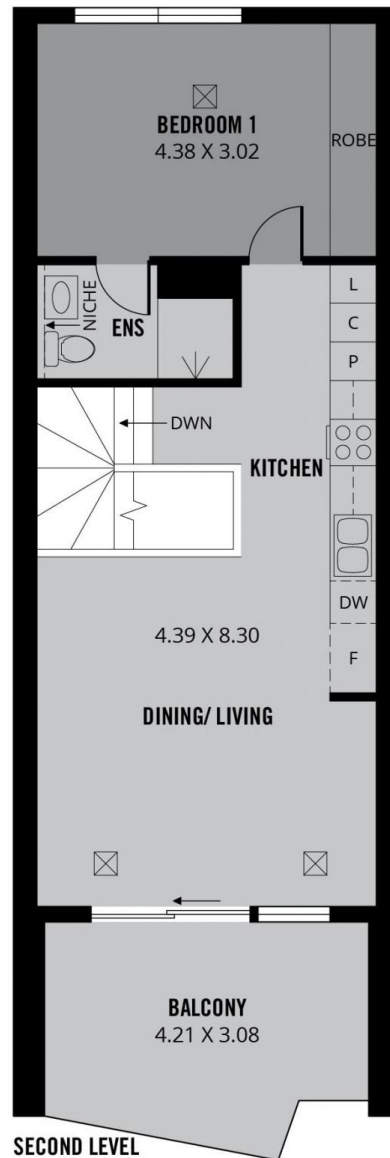
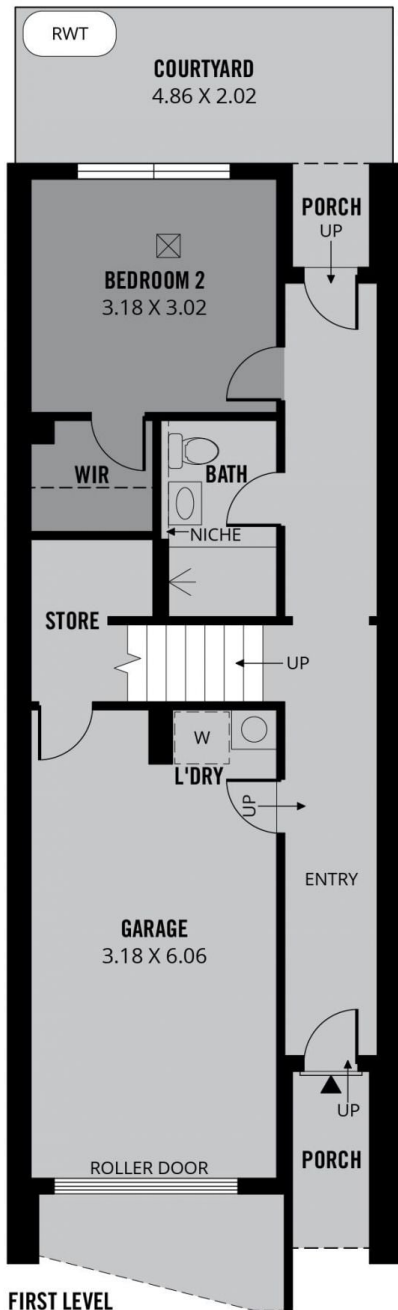
**Damian Popowycz**  
0413 026 026



**Mladen Djuric**  
0432259123

[For full version visit the website](https://www.schinellaproperty.com.au)

<https://www.schinellaproperty.com.au>



**151m<sup>2</sup>**

**TOTAL**

101m<sup>2</sup>

Living

13m<sup>2</sup>

Balcony

22m<sup>2</sup>

Garage

5m<sup>2</sup>

Porch

10m<sup>2</sup>

Courtyard



Scale in metres. This drawing is for illustration purposes only. All measurements are approximate and details intended to be relied upon should be independently verified.

Produced by **The Fotobase Group**