

SCHINELLA.



2/204 Trimmer Parade Seaton SA

4 🚗 2 🚗 2 🚗

Register to inspect apply via www.tenantoptions.com.au

With an impressive street front, this modern townhouse has a modern design tailored for low-maintenance, executive-style living.

The secure gated front entrance provides access into a private courtyard. Inside showcases style and sophistication with a luxurious light-filled void, drawing in views from the Royal Adelaide Golf course from the second level.

The ground floor accommodates the open-plan kitchen with butler's pantry, dining and living space which effortlessly integrates with the outdoor entertaining area. This floor

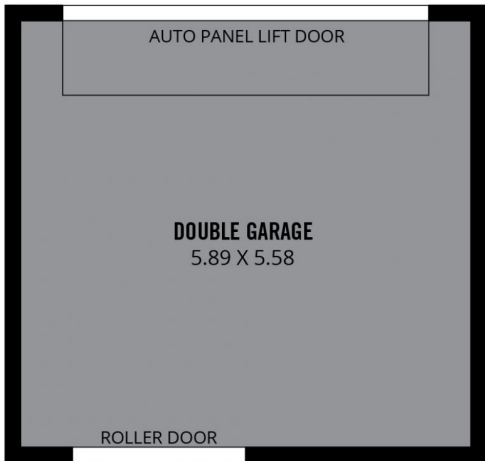
[For full version visit the website](#)

Type : House
Building Size : 195 sqm
Land Size : 240 sqm
View : <https://www.schinellaproperty.com.au/8439519>

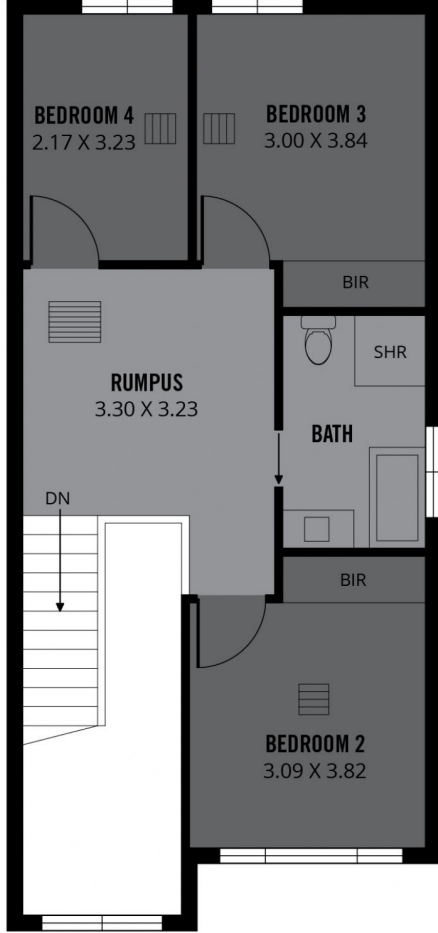
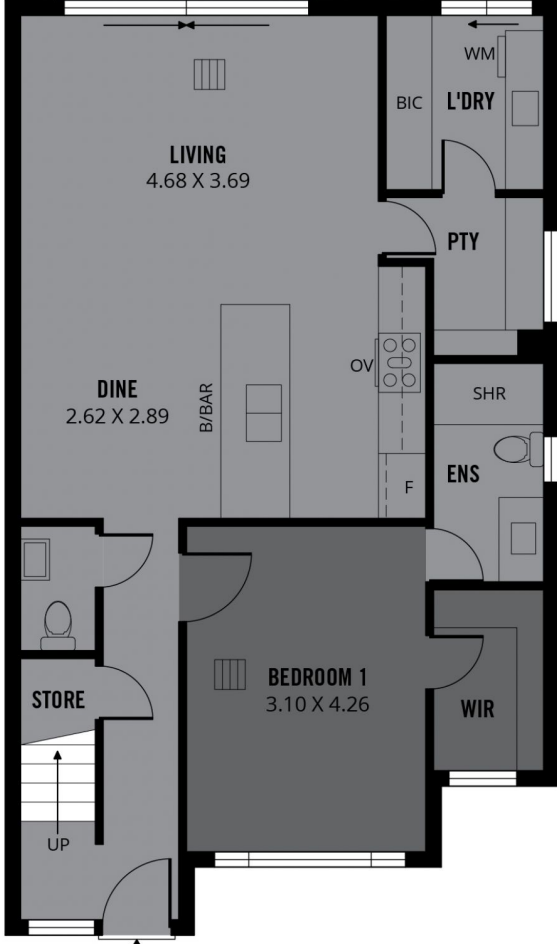
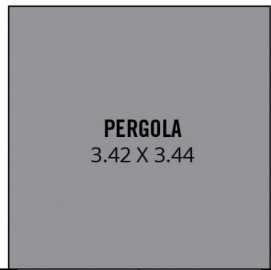


Amanda Bebbington
(08) 8294 4484

<https://www.schinellaproperty.com.au>



RWT



195m²

TOTAL

145m²

Living

38m²

Double Garage

12m²

Pergola