

SCHINELLA.



2/38 Wheaton Road Plympton SA

3  2  2 

BRAND NEW TOWNHOUSES CLOSE TO COMPLETION.

Inspection by appointment.

8 in group- 4 Floorplan options available- Please contact agent regarding price per floorplan.

Discover your dream home in Plympton. This exceptional 3-bedroom, 2.5-bathroom townhouse with double garage is beautifully designed and executed with a perfect blend of sophistication and style.

Located on arguably the best street in Plympton, the ever popular established, family-friendly neighborhood.

Type : House

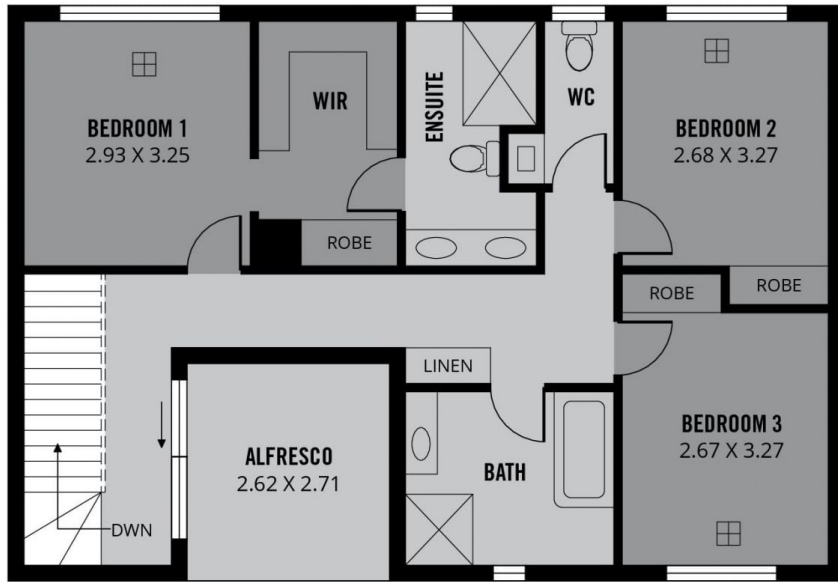
View : <https://www.schinellaproperty.com.au/8402440>



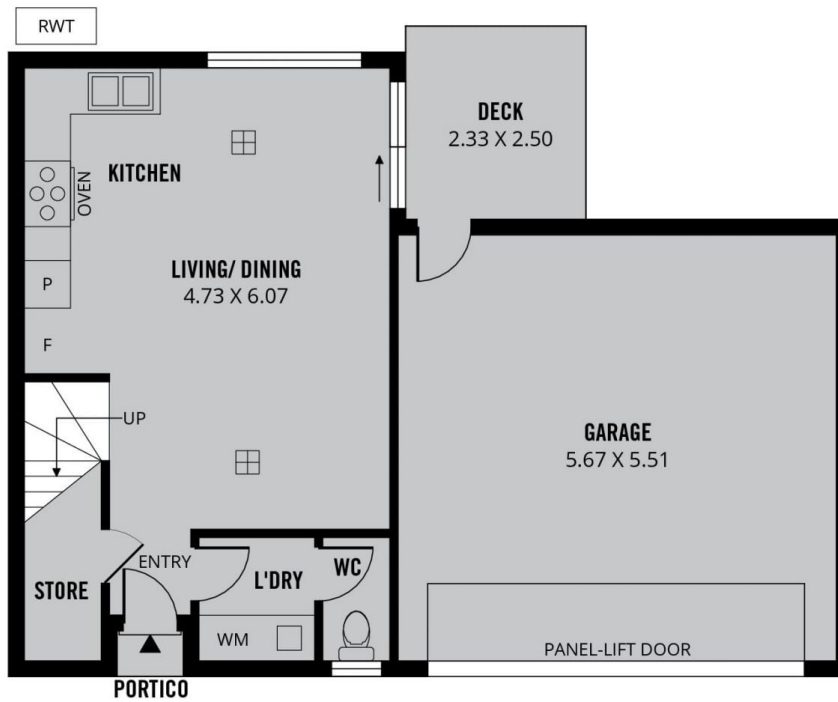
Jennifer Wilson-Gage
08 8294 4484

[For full version visit the website](https://www.schinellaproperty.com.au)

<https://www.schinellaproperty.com.au>



FIRST FLOOR



GROUND FLOOR



TOTAL



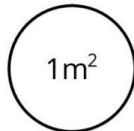
Living



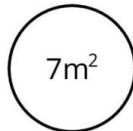
Deck



Garage



Portico



Alfresco



Scale in metres. This drawing is for illustration purposes only. All measurements are approximate and details intended to be relied upon should be independently verified.

Produced by **The Fotobase Group**