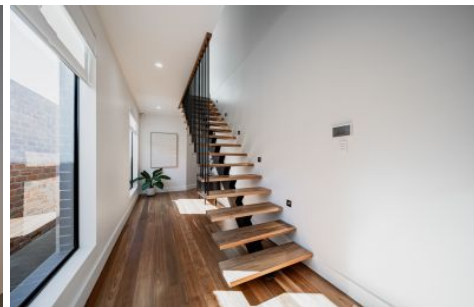
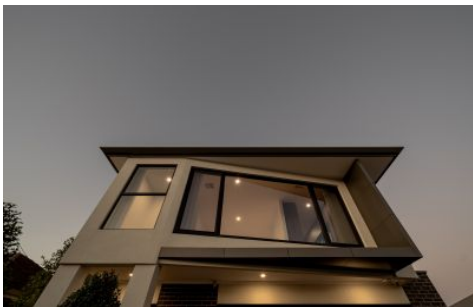





SCHINELLA.



12a Clovelly Avenue Royal Park SA

4  2  2 

For those that expect more from where they live, comes this stunning statement piece at 12a Clovelly Avenue, a lifestyle upgrade for professionals and growing families who value quality, generous space, and the finer things in life. Warm, grounded textures and premium finishes set the tone, a thoughtful two-level design that seamlessly blends functional living with its own distinctive style.

At its heart, the home embraces blended indoor to outdoor living, offering a purposeful space for both entertaining and everyday peace & enjoyment. The expansive terrace displays a fully equipped outdoor meals area, overlooking a lush, low-maintenance lawn.

Whether hosting loved ones or savouring quiet moments,

[For full version visit the website](https://www.schinellaproperty.com.au)

Type : House
Price : \$ 1,170,000
Building Size : 312.4 sqm
Land Size : 308 sqm
View : <https://www.schinellaproperty.com.au/8329546>



Mladen Djuric
0432259123



Damian Popowycz
0413 026 026

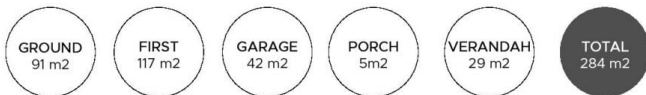
<https://www.schinellaproperty.com.au>



FIRST FLOOR



GROUND FLOOR



Plan is not to scale, measurements are indicative and in metres. Exterior elements are not in position. Plans should not be relied on. Interested parties should make & rely on their own enquiries * Produced by AV Creations