

# SCHINELLA.



## 8/23 Austral Terrace Morphettville SA

2 1 1

Currently rented offering a strong 4.8% gross rental return per annum!

Tastefully updated and well maintained, this solid brick unit offers unbeatable convenience in the heart of Morphettville - set back privately in a small low maintenance group.

A fantastic entry point into the market for first homebuyers looking for secure growth, or a set & forget investment opportunity in a popular location.

Step inside to a surprisingly spacious layout with floating timber floors throughout the living and meals area. The updated kitchen features a modern fit out including dual sink, stainless steel oven with gas cooktop and rangehood,

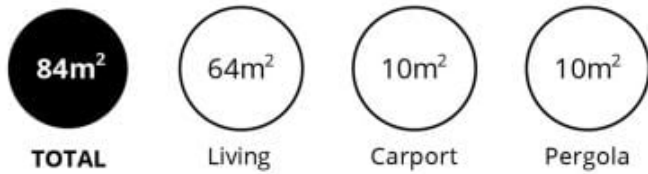
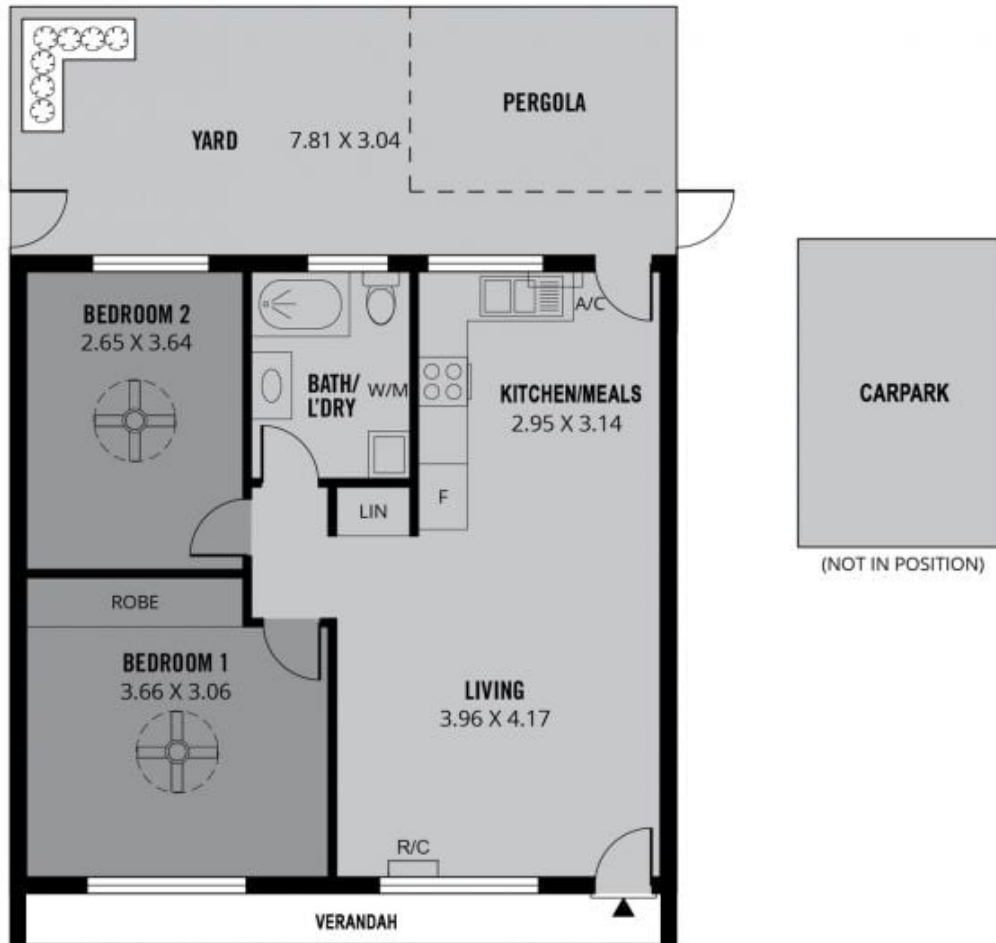
**Type** : Unit  
**View** : <https://www.schinellaproperty.com.au/8327778>



**Marco Schinella**  
08 8294 4484

[For full version visit the website](https://www.schinellaproperty.com.au)

<https://www.schinellaproperty.com.au>



Scale in metres. This drawing is for illustration purposes only. All measurements are approximate and details intended to be relied upon should be independently verified. Produced by **The Fotobase Group**