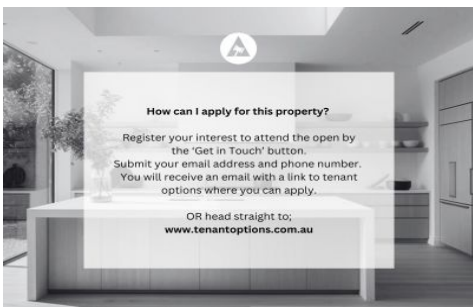


SCHINELLA.



11/465 Portrush Road Glenside SA

2 1 1

****Please send us an enquiry to receive instructions to apply****

Offering a superb lifestyle in the sought after Eastern suburbs! Stroll to Burnside Village with world-class shopping and cafes to enjoy, public transport links to the CBD.

This well-presented Freshly painted unit offers a private and secure entrance. Set behind electronic gate with intercom system and located on the second floor capturing scenic views of the foothills. This corner positioned unit presents with a spacious floorplan featuring two good-sized bedrooms with built in robes.

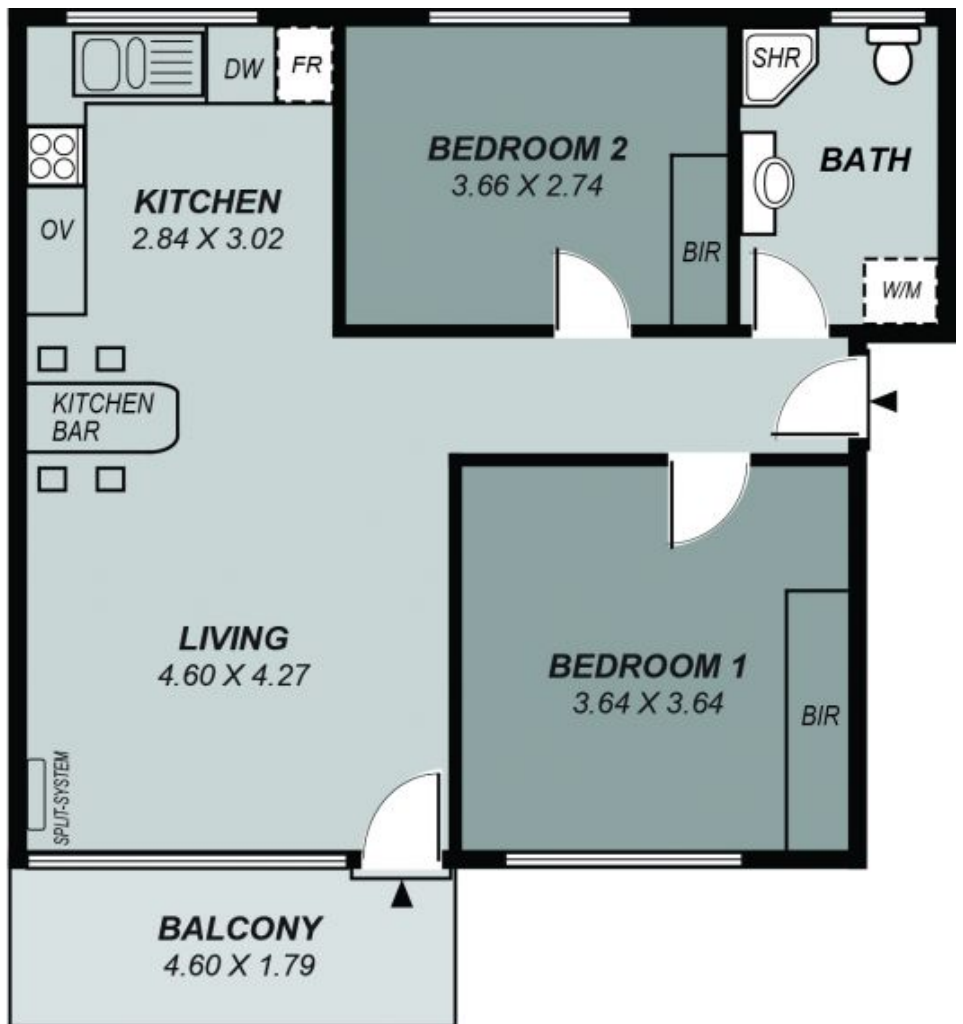
Type : Unit
Building Size : 91.64 sqm
View : <https://www.schinellaproperty.com.au/8304538>



Amanda Bebbington
(08) 8294 4484

[For full version visit the website](https://www.schinellaproperty.com.au)

<https://www.schinellaproperty.com.au>



*This drawing is for illustration purposes only .
 All measurements are approximate and details intended
 to be relied upon should be independently verified.*

Area	m ²
Living:	83.67
Balcony:	8.23
Total:	91.64