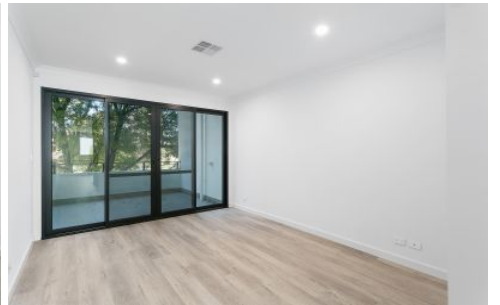


SCHINELLA.



2/247 Anzac Highway Plympton SA

3  **2**  **1** 

Invest and reap the rewards! This executive townhouse is currently tenanted with 4.8% approx. return on investment.

Attracting the attention of not only astute investors, but also owner occupiers wanting to take full advantage of its mixed-use options. Combine your residential lifestyle with an onsite workspace.

Perfect for professionals who work from home, the entrance floor comprises a SOHO room with kitchenette and separate powder room. A commercial-like space giving clients access from Anzac Highway. (If a workspace is not required, this flexible room can be a third bedroom or second lounge room - the choice is yours).

Type : Townhouse

Price : \$ 680,000

View : <https://www.schinellaproperty.com.au/8298793>



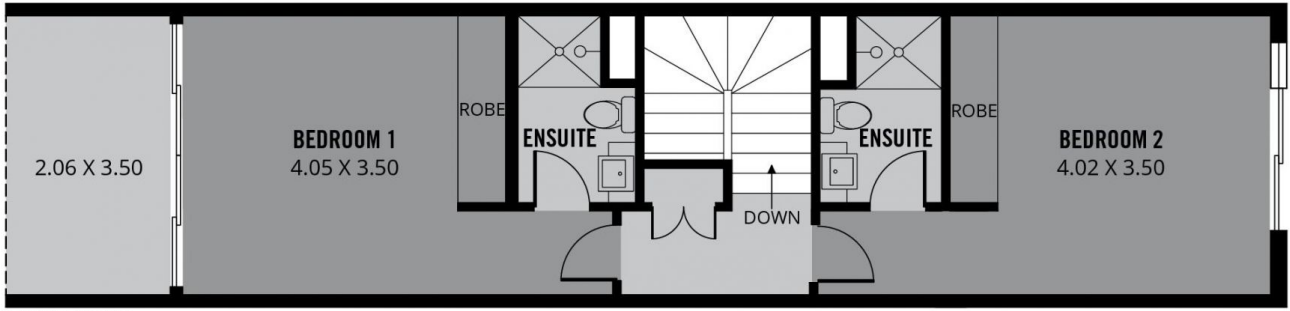
DeArna Schinella
08 8294 4484



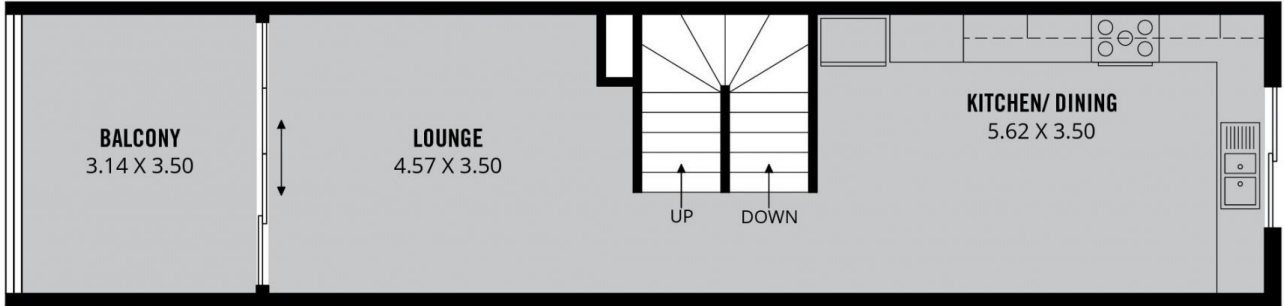
Marco Schinella
08 8294 4484

[For full version visit the website](https://www.schinellaproperty.com.au)

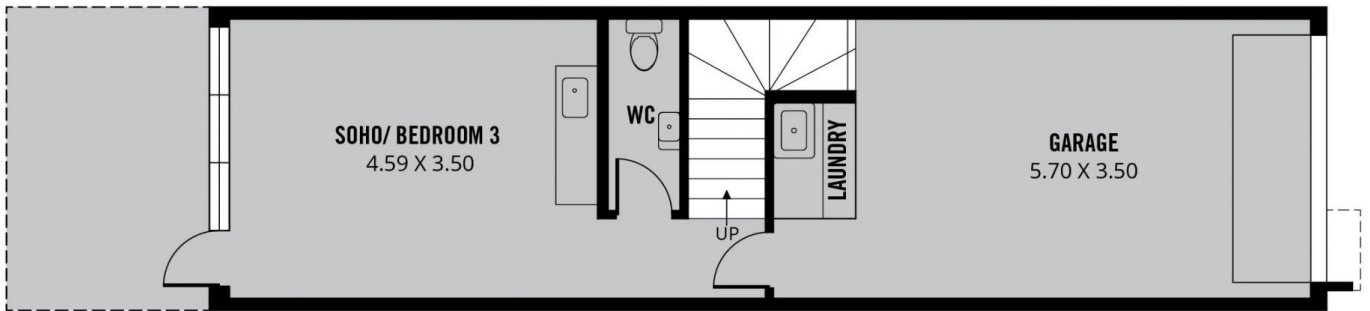
<https://www.schinellaproperty.com.au>



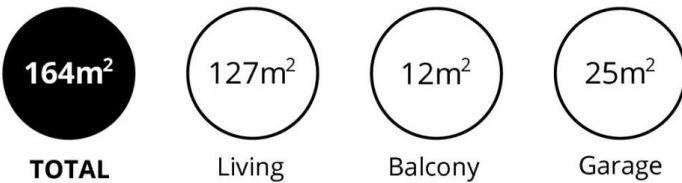
SECOND FLOOR



FIRST FLOOR



GROUND FLOOR



Scale in metres. This drawing is for illustration purposes only. All measurements are approximate and details intended to be relied upon should be independently verified.

Produced by **The Fotobase Group**