

SCHINELLA.



39 Monaro Road Aberfoyle Park SA

4  2  4 

Escape the noise and embrace a peaceful, tree-change lifestyle at 39 Monaro Road, Aberfoyle Park. Beautifully maintained and refurbished, perfect for growing families and buyers seeking comfortable living in calming surroundings.

Set on a valuable 711sqm corner allotment, this charming four-bedroom residence offers space, versatility, and warmth, all while being surrounded by nature. Bathed in natural sunlight, every room feels bright and welcoming, from the spacious master suite with ensuite and walk-in robe to the inviting living areas with exposed timber beams. This home delivers on so many fronts, whether you're a family craving room to grow with parks, schools, and shopping nearby, an avid gardener longing for peace and

Type : House
Price : \$ 870,000
Land Size : 711 sqm
View : <https://www.schinellaproperty.com.au/8290801>



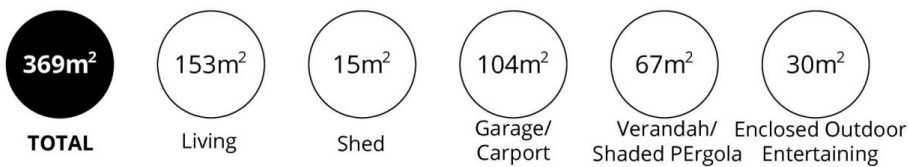
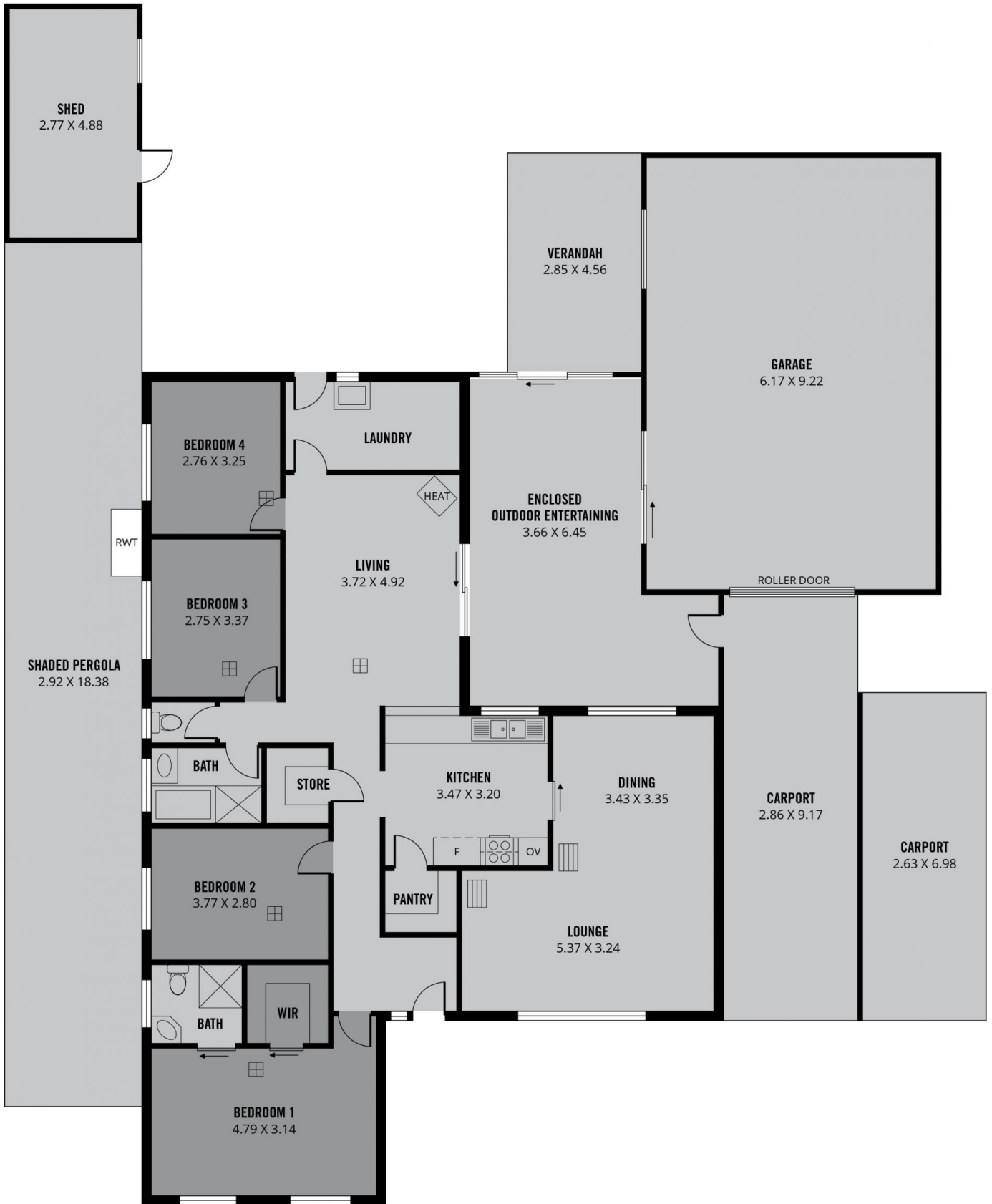
Mladen Djuric
0432259123



Damian Popowycz
0413 026 026

[For full version visit the website](https://www.schinellaproperty.com.au)

<https://www.schinellaproperty.com.au>



Scale in metres. This drawing is for illustration purposes only. All measurements are approximate and details intended to be relied upon should be independently verified.

Produced by **The Fotobase Group**