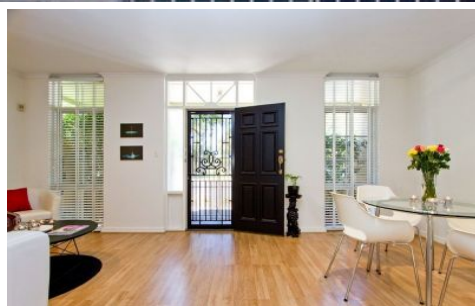
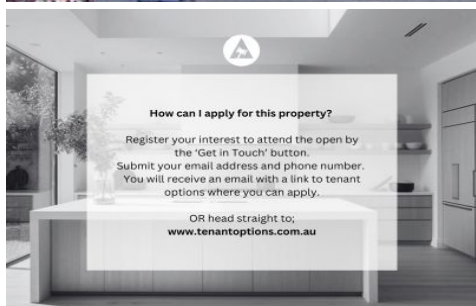


SCHINELLA.



65 MacKinnon Parade North Adelaide SA

3 1 1

****Send us an enquiry to receive instructions on how to apply****

This striking two-storey, solid brick townhouse is ideally positioned opposite the beautiful Adelaide University Parklands, only meters to the popular Lion Hotel and cosmopolitan Melbourne Street, or enjoy a walk over the river to Adelaide CBD or picturesque Adelaide Oval, this is the perfect location.

Spacious open plan living and dining areas, a gas wall heater, modern low-voltage down-lights, white-painted timber venetian blinds and stylish 'timber look' flooring throughout the ground floor living areas. A well equipped kitchen features European appliances, dishwasher, gas

Type : Townhouse

View : <https://www.schinellaproperty.com.au/8275390>



Amanda Bebbington
(08) 8294 4484

[For full version visit the website](https://www.schinellaproperty.com.au)

<https://www.schinellaproperty.com.au>

