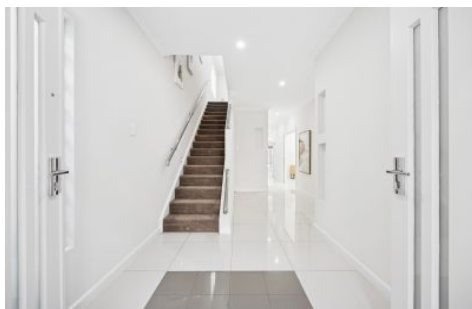


SCHINELLA.



21a Wright Street Henley Beach SA

4 🚗 3 🚗 4 🚗

Designed for spacious family living, this impressive double storey home offers the ultimate blend of versatility and comfort. Built in 2012 and set on a 411sqm stand-alone allotment, this expansive residence is perfect for large families seeking room to grow, connect, and entertain, all within walking distance to Henley Square and the beach.

Type : House
Building Size : 318 sqm
Land Size : 411 sqm
View : <https://www.schinellaproperty.com.au/8274759>

GROUND FLOOR

?Expansive open plan living, for those with large families who love to entertain, vor unwind and get away from all the noise.

?Chef's kitchen with Bellini appliances, elegant and durable granite benchtops.

WIP to help keep your ingredients organised.

?Second living or can be a 5th bedroom, guest suite with

[For full version visit the website](https://www.schinellaproperty.com.au)



Mladen Djuric
0432259123



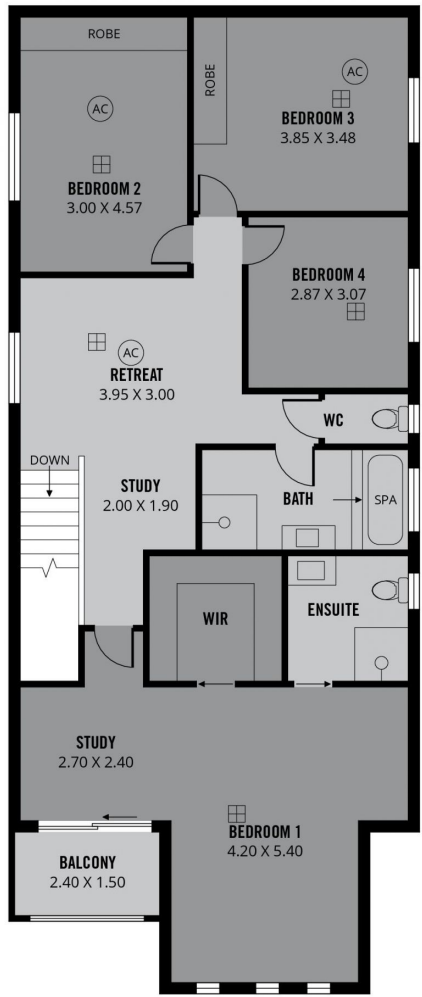
Damian Popowycz
0413 026 026

RWT

SHED
1.50 X 2.20



LOWER FLOOR



UPPER FLOOR

318m²
TOTAL

236m²
Living

4m²
Shed

46m²
Garage

9m²
Porch/
Balcony

23m²
Outdoor
Entertaining



Scale in metres. This drawing is for illustration purposes only. All measurements are approximate and details intended to be relied upon should be independently verified.