

# SCHINELLA.



**13A Saltram Road Glenelg SA**

4  3  2 

## LIVE THE DREAM - ONLY 100M TO THE BEACH

Experience first-class beachside living just 100m from South Esplanade. Walk to Glenelg's vibrant shopping, cafe and dining precinct, with zoning for Brighton Secondary School.

**Type** : House

**Building Size** : 344 sqm

**View** : <https://www.schinellaproperty.com.au/8267328>

## BUILT TO IMPRESS - TORRENS TITLE LUXURY

Expertly crafted in 2024, this torrens title home delivers a bespoke beachside lifestyle. Spanning approx 344sqm of high-end design, enjoy a bright, open plan layout paired with elite fixtures and finishes.



**Marco Schinella**  
08 8294 4484



**DeArna Schinella**  
08 8294 4484

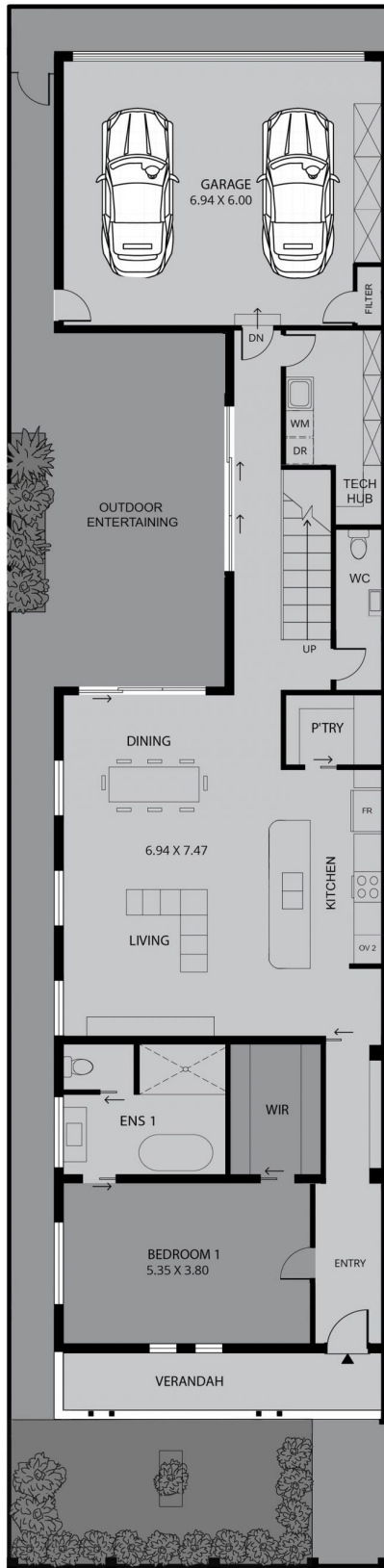
## DESIGNER LIVING WITH STATEMENT FEATURES

Soaring 3.6m entry ceilings, a floating timber staircase with frameless glass, LED mood lighting, and fluted feature

[For full version visit the website](https://www.schinellaproperty.com.au)

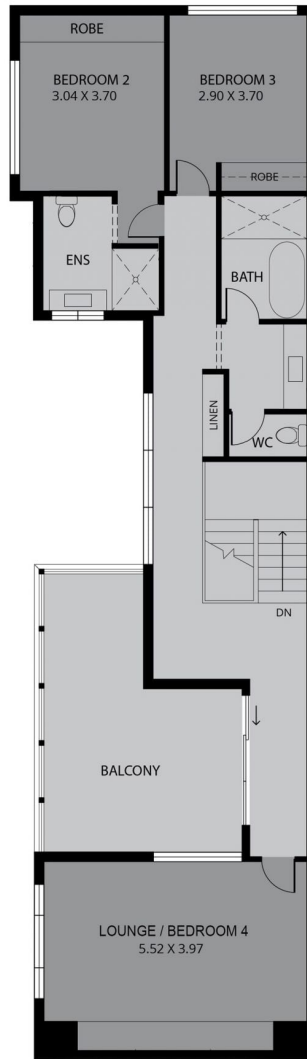
<https://www.schinellaproperty.com.au>

GARDEN LANE



GROUND FLOOR

SALTRAM ROAD



UPPER FLOOR

344m<sup>2</sup>

TOTAL HOME



Scale in metres. This drawing is for illustration purposes only. All measurements are approximate and details intended to be relied upon should be independently verified.

Produced by The Fotobase Group