

# SCHINELLA.



## 8A Judith Place Grange SA

3 2 2

Nestled in the sought-after beachside suburb of Grange, this stunning, 2024 built home offers the perfect blend of stylish modern luxury and relaxed coastal living. Designed with style and functionality in mind, the home features multiple living spaces, with open-plan living and dining that flows effortlessly to an alfresco entertaining area.

Featuring three bedrooms (including downstairs master with ensuite and built-in wardrobe, and upstairs - bedroom 2 with WIR and 2-way bathroom and bedroom 3 with BIR)

The sleek, contemporary kitchen is a chef's dream, boasting premium appliances, stone benchtops, ample storage and handy butler's pantry. The kitchen overlooks the open-plan living and dining area with gas heating which

**Type** : House  
**Price** : \$ 1,500,000  
**Land Size** : 350 sqm  
**View** : <https://www.schinellaproperty.com.au/82659>  
43



**Damian Popowycz**  
0413 026 026



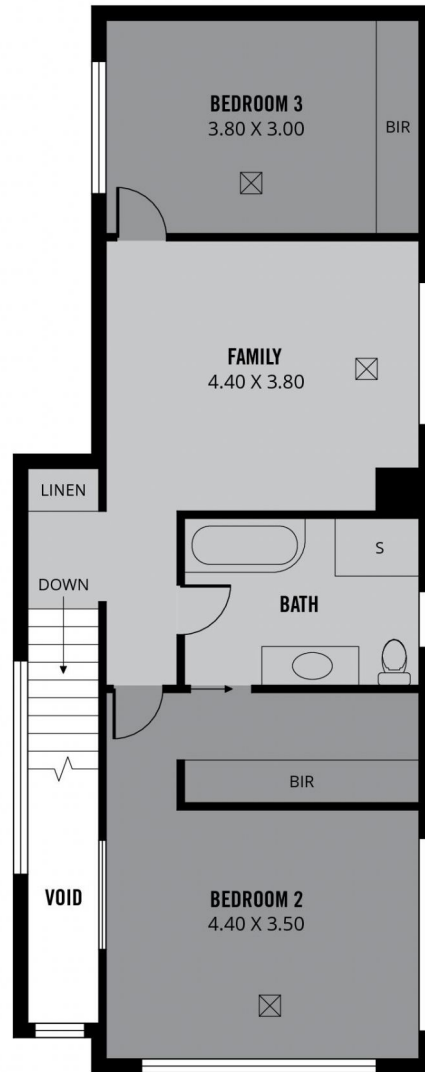
**Mick Mehicic**  
0412452262

[For full version visit the website](https://www.schinellaproperty.com.au)

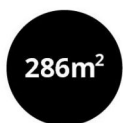
<https://www.schinellaproperty.com.au>



**GROUND FLOOR**



**FIRST FLOOR**



**TOTAL**



Living



Store



Garage



Porch



Alfresco



Scale in metres. This drawing is for illustration purposes only. All measurements are approximate and details intended to be relied upon should be independently verified.

Produced by **The Fotobase Group**