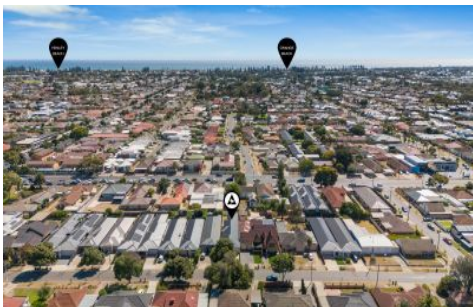





SCHINELLA.



15A Leven Avenue Seaton SA

3  2  4 

It's not often you find a modern courtyard home that delivers expansive internal space without sacrificing outdoor living. Built in 2024 on a generous 411sqm (approx.) allotment, this Torrens Titled residence is designed for comfort, versatility, and effortless living-perfect for families, professionals, and downsizers alike.

With multiple living zones, this home adapts to your lifestyle, offering dedicated spaces for entertaining the kids or grandkids, quiet retreats for relaxation, and functional work-from-home areas. Thoughtfully crafted with high-end finishes that captivate, and an outdoor entertaining space ideal for hosting or unwinding, 15a Leven Avenue is a rare find that ticks every box.

Type : House
Price : \$ 1,280,000
Building Size : 265 sqm
Land Size : 411 sqm
View : <https://www.schinellaproperty.com.au/8263075>

[For full version visit the website](https://www.schinellaproperty.com.au)

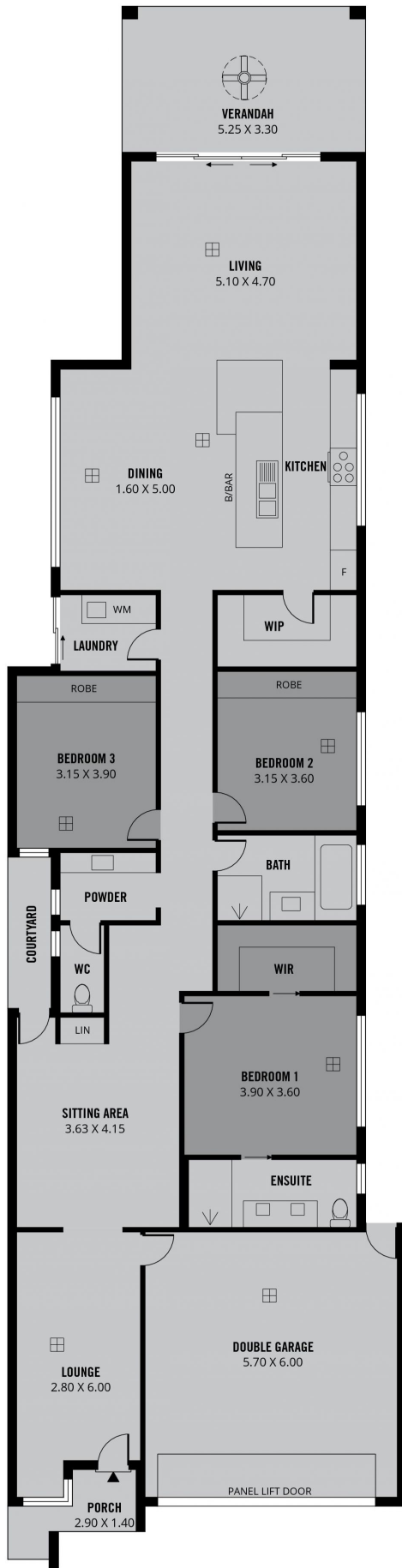


Mladen Djuric
0432259123



Damian Popowycz
0413 026 026

<https://www.schinellaproperty.com.au>



253m²

TOTAL

193m²

Living

17m²

Verandah

37m²

Double
Garage

3m²

Porch

3m²

Courtyard



Scale in metres. This drawing is for illustration purposes only. All measurements are approximate and details intended to be relied upon should be independently verified.

Produced by **The Fotobase Group**