



# SCHINELLA.



## 53 Cherry Avenue Direk SA

4  2  2 

Offering contemporary living with scope to add your own touch, this spacious family residence is the ideal family home, starter, or solid investment opportunity.

Set in a thriving estate the home is conveniently located close to nearby reserves, wetlands, sporting facilities, the Lyell McEwin Hospital and Springbank Plaza, Parabanks, and Paralowie Shopping Centres.

Featuring four bedrooms (main with walk-in robe and ensuite, bedrooms 2 and 3 with built-in wardrobes), a bright central family bathroom, and modern kitchen with gas cooktops overlooking the open-plan living and dining area.

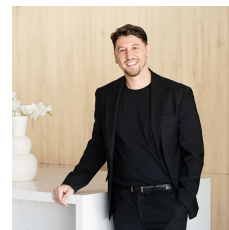
The rear yard offers room for the kids to play and is a neat

[For full version visit the website](https://www.schinellaproperty.com.au/8236197)

**Type** : House  
**Price** : \$ 650,000  
**Land Size** : 375 sqm  
**View** : <https://www.schinellaproperty.com.au/8236197>



**Damian Popowycz**  
0413 026 026



**Mladen Djuric**  
0432259123



**157m<sup>2</sup>**

**TOTAL**

117m<sup>2</sup>

Living

4m<sup>2</sup>

Porch

36m<sup>2</sup>

Garage



Scale in metres. This drawing is for illustration purposes only. All measurements are approximate and details intended to be relied upon should be independently verified.

Produced by **The Fotobase Group**