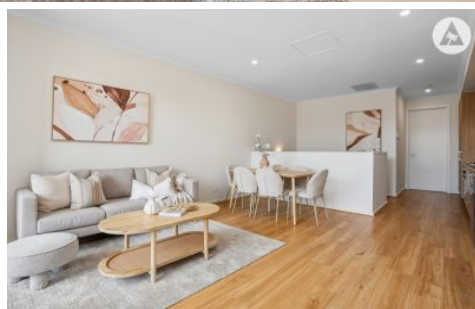


SCHINELLA.



4 Edith Street Findon SA

2  2  1 

Contact Agent for a list of area sales to assist with offers closing campaign.

This stylish townhouse is positioned in the popular re-developed area of Findon. Situated between the City and the Sea, move straight in or invest - this property will capture the attention of first home buyers, professionals and astute investors for its attractive rental potential.

The modern lay-out is designed for low-maintenance, urban living. Featuring light and bright spaces with lovely soft neutral tones throughout - The hub of this home is located on the first floor with architecturally designed floor-to-ceiling windows drawing in the natural sunlight.

Type : House

Price : \$ 701,000

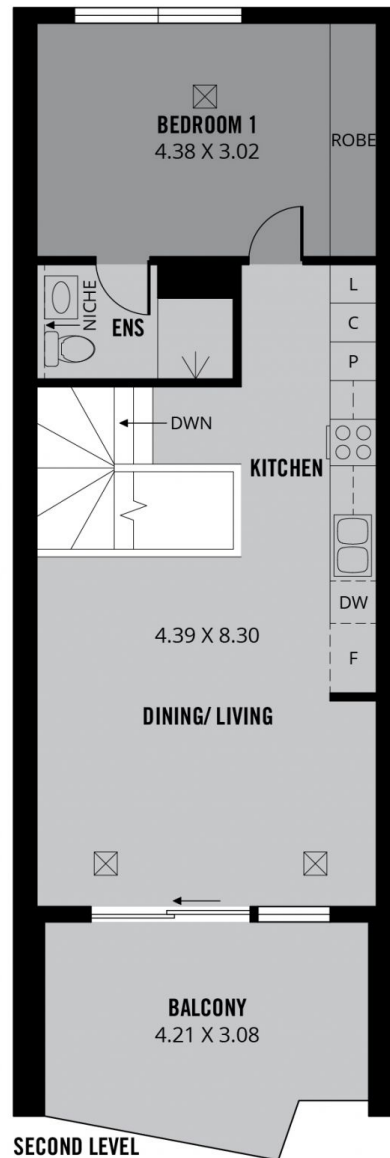
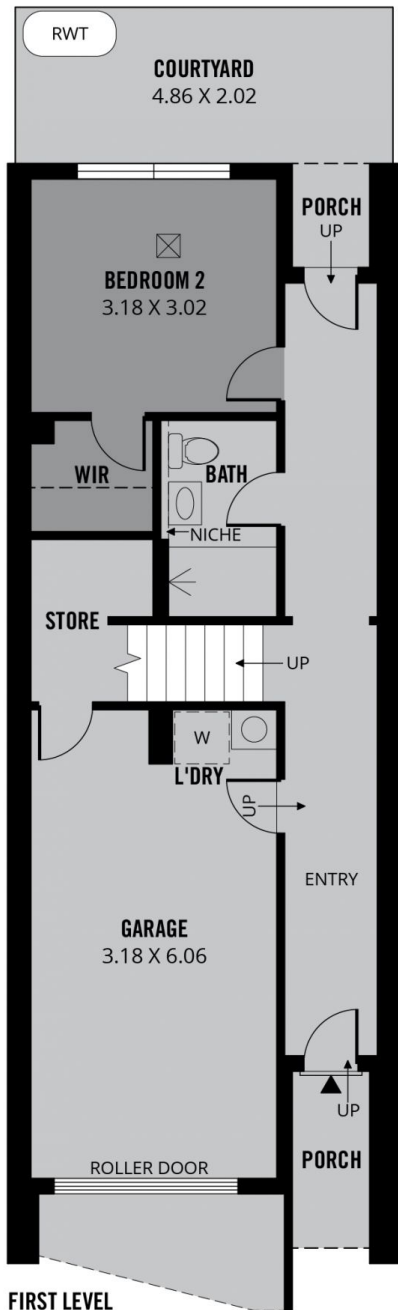
View : <https://www.schinellaproperty.com.au/8235427>



DeArna Schinella
08 8294 4484

[For full version visit the website](https://www.schinellaproperty.com.au)

<https://www.schinellaproperty.com.au>



151m²

TOTAL

101m²

Living

13m²

Balcony

22m²

Garage

5m²

Porch

10m²

Courtyard



Scale in metres. This drawing is for illustration purposes only. All measurements are approximate and details intended to be relied upon should be independently verified.

Produced by **The Fotobase Group**