

SCHINELLA.



47 Digital Drive Tonsley SA

2 2 1

****Please send us an enquiry to receive instructions on how to apply****

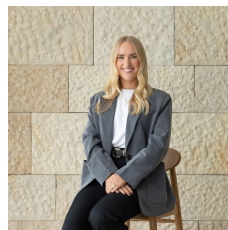
This two-storey loft home offers a low-maintenance, easy care lifestyle. Positioned in Tonsley Village close to Flinders University, Hospital, TAFE SA and public transport to the CBD.

This home is perfect for students and professionals alike, wanting to be in this fabulous location close to school or work!

With an impressive high-loft ceiling, this light-filled home offers open-plan living that seamlessly flows out to the private courtyard with carport. The stylish kitchen

Type : Townhouse

View : <https://www.schinellaproperty.com.au/8235305>



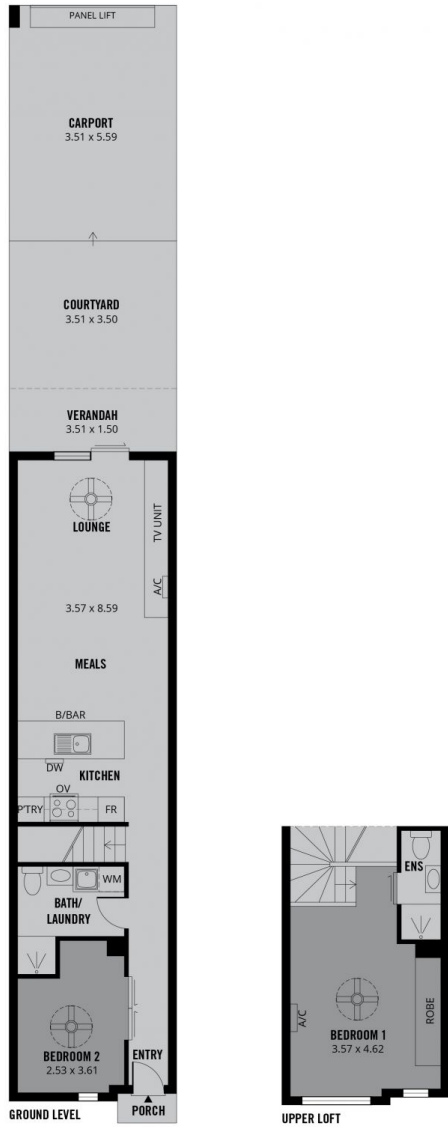
Renee Jackson
8294 4484



Amanda Bebbington
(08) 8294 4484

[For full version visit the website](https://www.schinellaproperty.com.au)

<https://www.schinellaproperty.com.au>



113m²

TOTAL

76m²

Living

5m²

Verandah

12m²

Courtyard

20m²

Carport



Scale in metres. This drawing is for illustration purposes only. All measurements are approximate and details intended to be relied upon should be independently verified.

Produced by **The Fotobase Group**