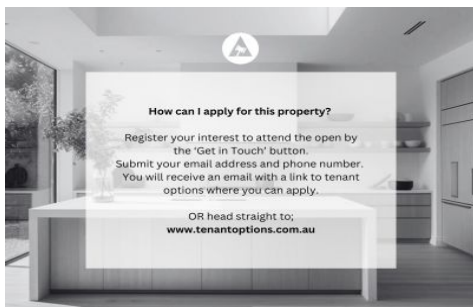


SCHINELLA.



4 Russell Street Glenelg North SA

3  2  2 

****Send us an enquiry to receive instructions on how to apply****

Luxurious and spacious 3 bedroom townhouse in a beach side location with quality fittings throughout. Downstairs is a light filled open plan living and dining area in neutral tones with porcelain floors, designer kitchen, Caesar stone bench tops with European appliances gas cook top & dishwasher. The kitchen leads out to an undercover alfresco entertaining area and courtyard.

Adjacent the downstairs living area is a powder room for convenience and a generous laundry with plenty of storage and bench top space. There is also access to a secure double car garage from the foyer entrance.

Adjacent the downstairs living area is a powder room for convenience and a generous laundry with plenty of storage and bench top space. There is also access to a secure double car garage from the foyer entrance.

[For full version visit the website](https://www.schinellaproperty.com.au)

Type : House

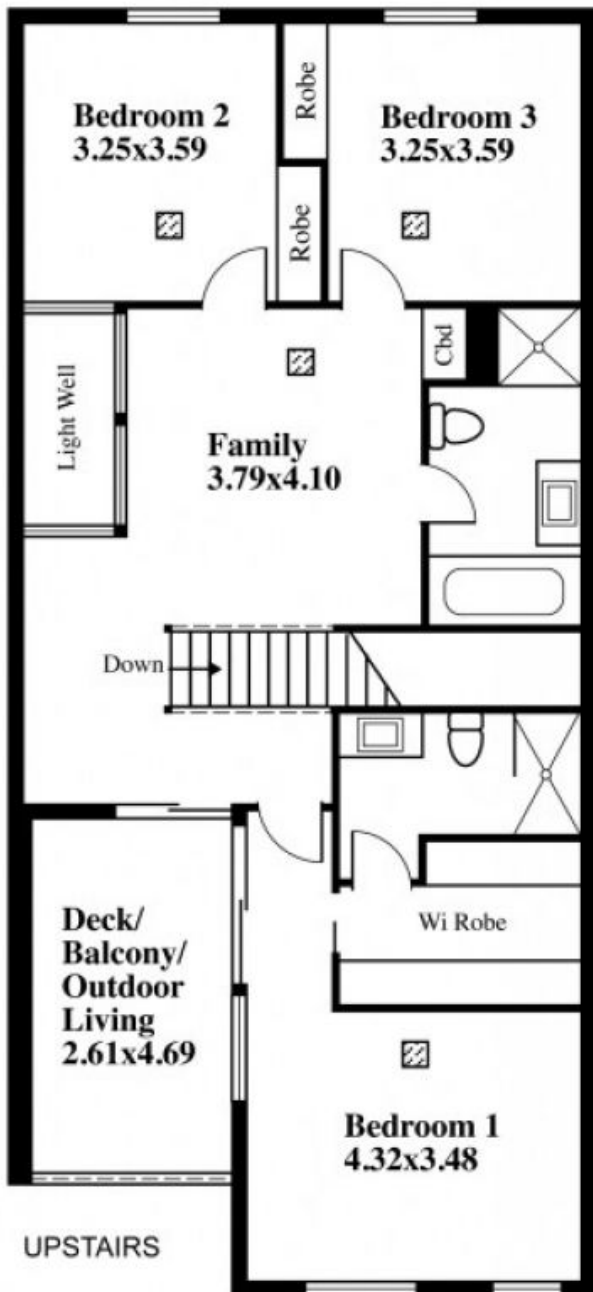
View : <https://www.schinellaproperty.com.au/8220053>



Amanda Bebbington
(08) 8294 4484

<https://www.schinellaproperty.com.au>

Corner Of Tapleys Hill Road & Russell Street, Glenelg



This drawing is for illustration purposes only.
(Drawing is not to scale)

The drawing and the information contained is not intended to be part of any contract. All measurements are approximate and details intended to be relied upon should be independently verified.

ESTIMATE OF AREA
 GROUND FLOOR 119.36 Square metres/ 12.83 Squares
 (Including Garage)
 UPSTAIRS 126.48 Square metres/ 13.59 Squares
 FRONT VERANDAH 8.10 Square metres/ 0.87 Squares
 OUTDOOR LIVING 15.36 Square metres/ 1.65 Squares
TOTAL 269.30 Square metres/ 28.94 Squares