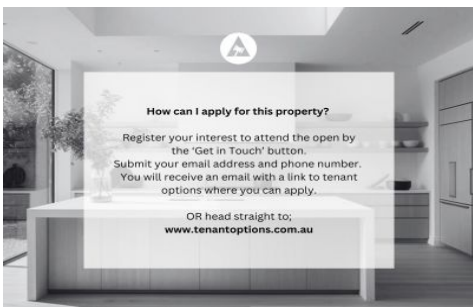


# SCHINELLA.



**17/2 Harrow Road Somerton Park SA**

1 1 1

Submit an enquiry and we will respond on how to apply for this property

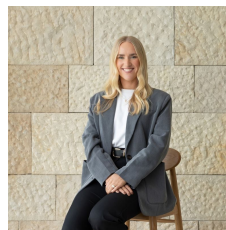
**Type** : Unit

**View** : <https://www.schinellaproperty.com.au/8123005>

This ground-floor unit is perfect for those seeking a low-maintenance seaside lifestyle.

Its ultra convenient location is close to Hove train station and bus stop, Westfield Shopping Centre and beautiful Somerton Park Beach. Set between popular Jetty Road Brighton and Glenelg, with an abundance of cafes and restaurants to choose from.

Inside offers a light and bright living area with spit system air conditioning, large bedroom with built-in robes and



**Renee Jackson**  
8294 4484



**Amanda Bebbington**  
(08) 8294 4484

[For full version visit the website](https://www.schinellaproperty.com.au)

<https://www.schinellaproperty.com.au>



The floor plan is not to scale, measurements are indicative and in meters. Exterior elements are not in position. Plans should not be relied on, interested parties should measure and rely on their own enquiries.

Produced by DIAKRIT