

# SCHINELLA.



**120 Maple Avenue Royal Park SA**

3 1 3

Discover the charm of this solid brick family home in the heart of Royal Park. Perfectly maintained in excellent original condition, this home is ideal for first-home buyers, investors or those upsizing.

With three bedrooms (2 with built-in wardrobes), a formal lounge room and a central kitchen and dining area, this home is ready to move into, or alternatively would be perfect for those to update, renovate and add instant value - the potential is limitless.

Outside on this 476sqm (approx) allotment, the well maintained gardens frame the backyard presenting the perfect place for kids play, while the carport with access to the rear garage offers secure vehicle space.

Set in a thriving location with solid capital growth, you are just minutes from West Lakes Mall, and a host of local

**Type** : House  
**Price** : \$ 765,000  
**Land Size** : 476 sqm  
**View** : <https://www.schinellaproperty.com.au/8116024>



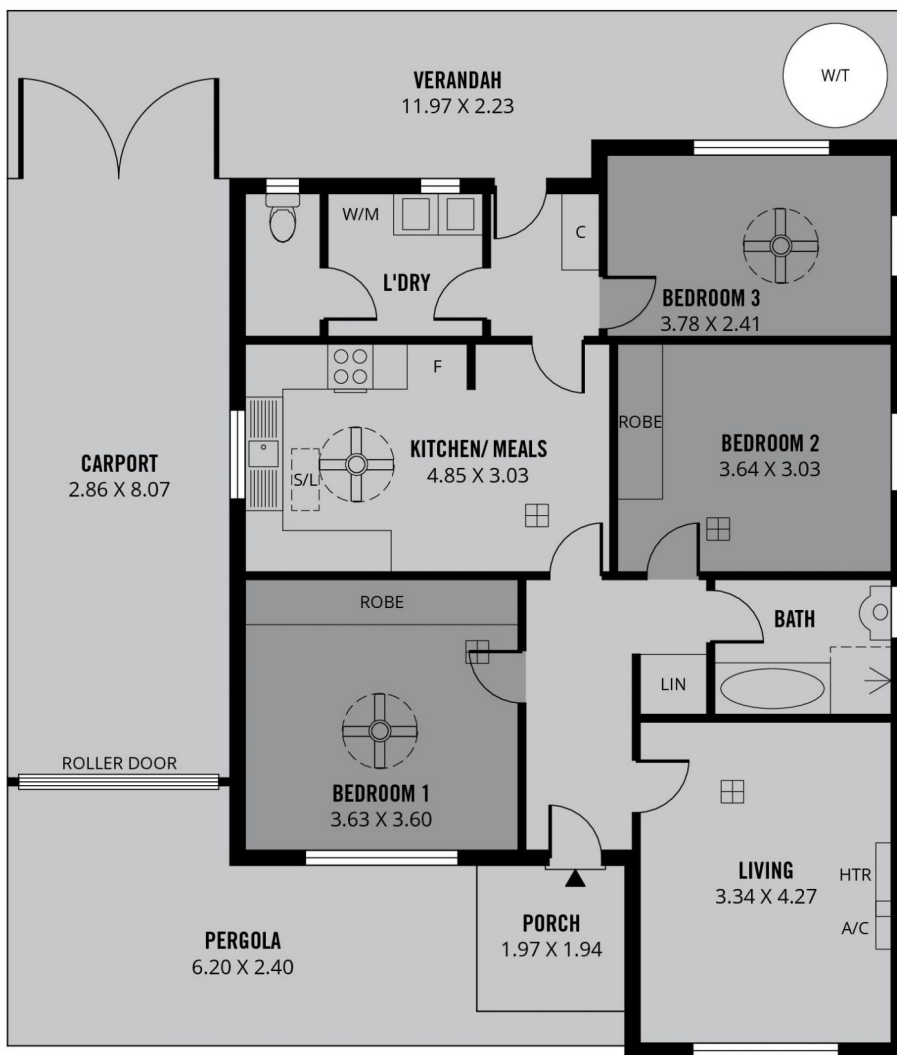
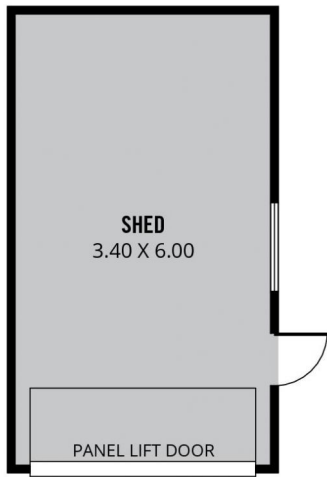
**Damian Popowycz**  
0413 026 026



**Mladen Djuric**  
0432259123

[For full version visit the website](https://www.schinellaproperty.com.au)

<https://www.schinellaproperty.com.au>



**188m<sup>2</sup>**

**TOTAL**

94m<sup>2</sup>

Living

22m<sup>2</sup>

Shed

23m<sup>2</sup>

Carport

24m<sup>2</sup>

Porch/  
Pergola

25m<sup>2</sup>

Verandah



Scale in metres. This drawing is for illustration purposes only. All measurements are approximate and details intended to be relied upon should be independently verified.

Produced by **The Fotobase Group**