

SCHINELLA.



26 Kelvin Avenue Warradale SA

4  2  4 

Perfectly positioned in the ever popular suburb of Warradale, where everything is at your fingertips. A beautiful blend of modern living, convenient location and coastal charm. Located in the sought after Brighton High school zone.

This lovely home was completed just this 2 years ago. A modern four bedroomed home that sits on a generous allotment of Approx 450sm.

Behind a stylish facade this home has so much to offer. Between Lofy high ceilings, well thought out design and carefully chosen fixtures, there is much to love about this home.

[For full version visit the website](https://www.schinellaproperty.com.au/80844)

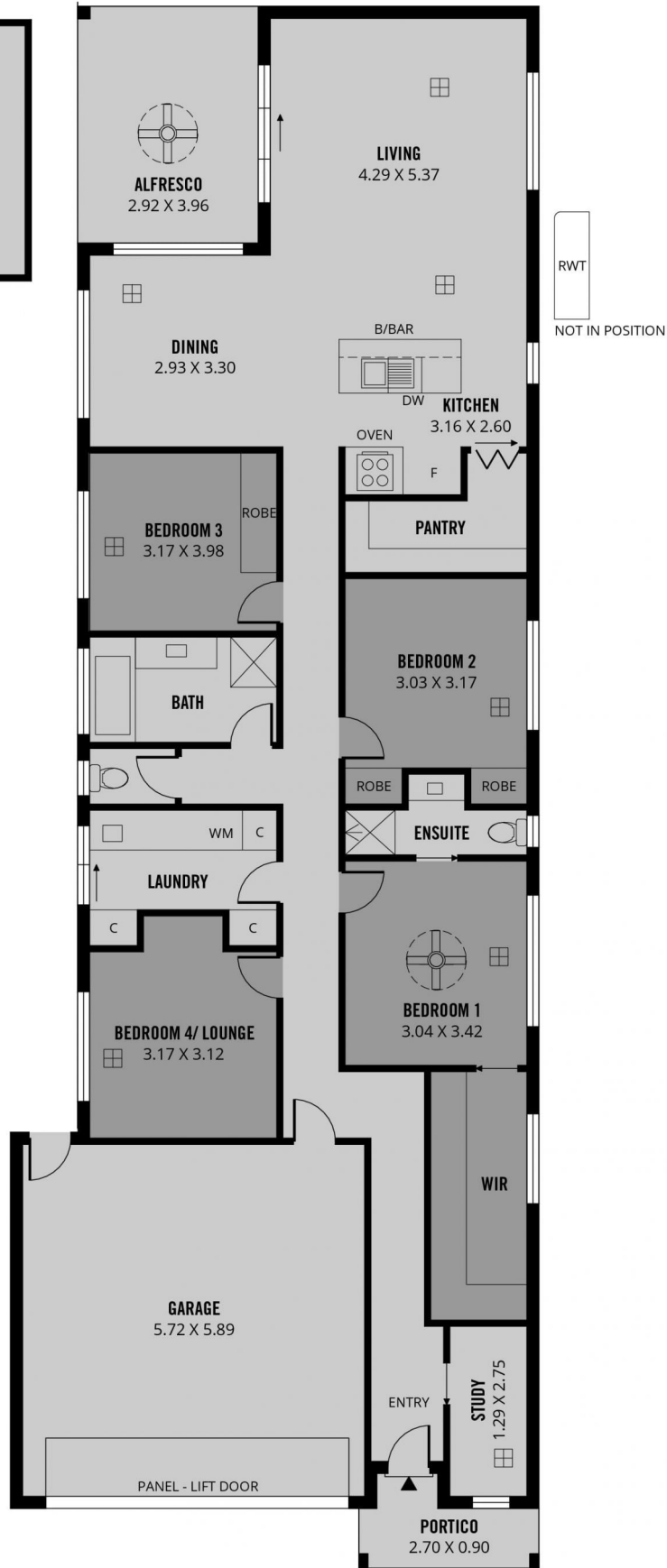
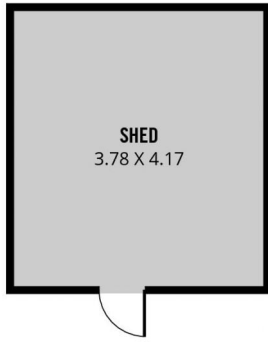
Type : House
Price : \$ 1,085,500
Land Size : 450 sqm
View : <https://www.schinellaproperty.com.au/80844>
15



Jennifer Wilson-Gage
08 8294 4484

<https://www.schinellaproperty.com.au>

NOT IN POSITION



221m²

TOTAL



152m²

Living



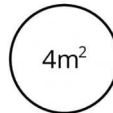
17m²

Shed



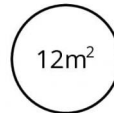
36m²

Garage



4m²

Portico



12m²

Alfresco



Scale in metres. This drawing is for illustration purposes only. All measurements are approximate and details intended to be relied upon should be independently verified.

Produced by The Fotobase Group