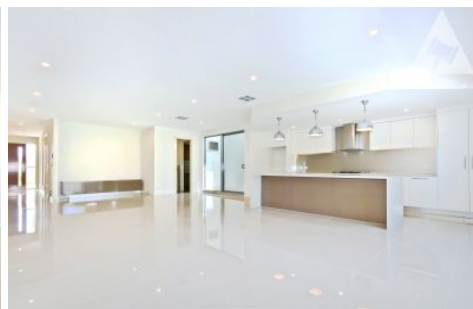


SCHINELLA.



2 Russell Street Glenelg North SA

3 2 2

To apply head to Tenant Options:
<https://app.tenantoptions.com.au/>

Type : House

View : <https://www.schinellaproperty.com.au/8084123>

Offering a beachside lifestyle all year round, this executive townhouse is luxurious accommodation in the heart of Glenelg North. Walk to the beach, the Patawalonga or enjoy the array of cafes, restaurants at Marina Pier and shopping precinct on Jetty Road.

Close to the tram stop with easy access to the CBD. A spacious 3 bedroom townhouse with quality fittings throughout. Downstairs is a light filled open plan living and dining area in neutral tones with porcelain floors, designer kitchen, stone bench tops with European appliances gas cook top & dishwasher. The kitchen leads out to an

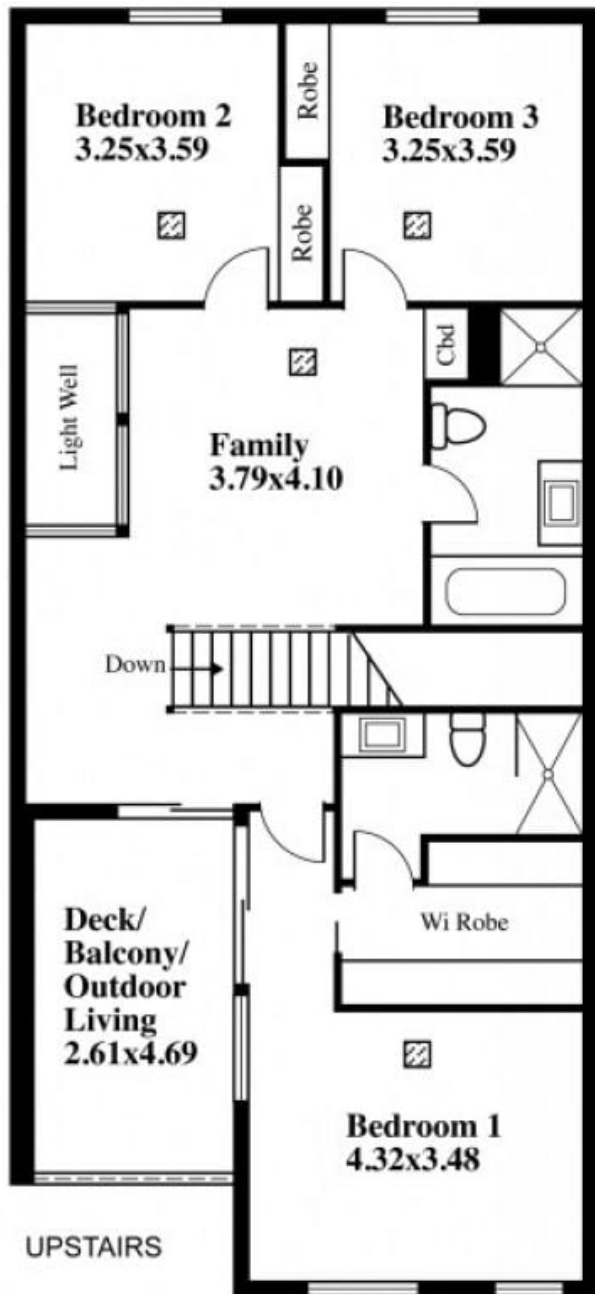


Amanda Bebbington
(08) 8294 4484

[For full version visit the website](https://www.schinellaproperty.com.au)

<https://www.schinellaproperty.com.au>

Corner Of Tapleys Hill Road & Russell Street, Glenelg



This drawing is for illustration purposes only.
(Drawing is not to scale)

The drawing and the information contained is not intended to be part of any contract. All measurements are approximate and details intended to be relied upon should be independently verified.

ESTIMATE OF AREA

GROUND FLOOR 119.36 Square metres/ 12.83 Squares
 (Including Garage)

UPSTAIRS 126.48 Square metres/ 13.59 Squares

FRONT VERANDAH 8.10 Square metres/ 0.87 Squares

OUTDOOR LIVING 15.36 Square metres/ 1.65 Squares

TOTAL 269.30 Square metres/ 28.94 Squares