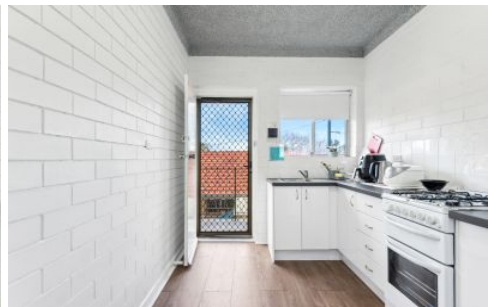


SCHINELLA.



13/414 Sir Donald Bradman Drive Brooklyn Park SA

2 1 1

Ideal set & forget investment!

Attractive 5.2% gross rental return per annum! This neat & tidy upper first floor unit has been tastefully upgraded to include all the extras.

Currently rented with solid cash flow until Mar 2025, perfect for first home buyers & investors looking to capitalise in a popular western suburb's location with future opportunity.

A neat and secure group offering plenty of privacy, enjoy a central position within the group with easy stair access & stunning east facing hilltop views offering plenty of natural light.

Type : Unit
Building Size : 62 sqm
View : <https://www.schinellaproperty.com.au/8054422>



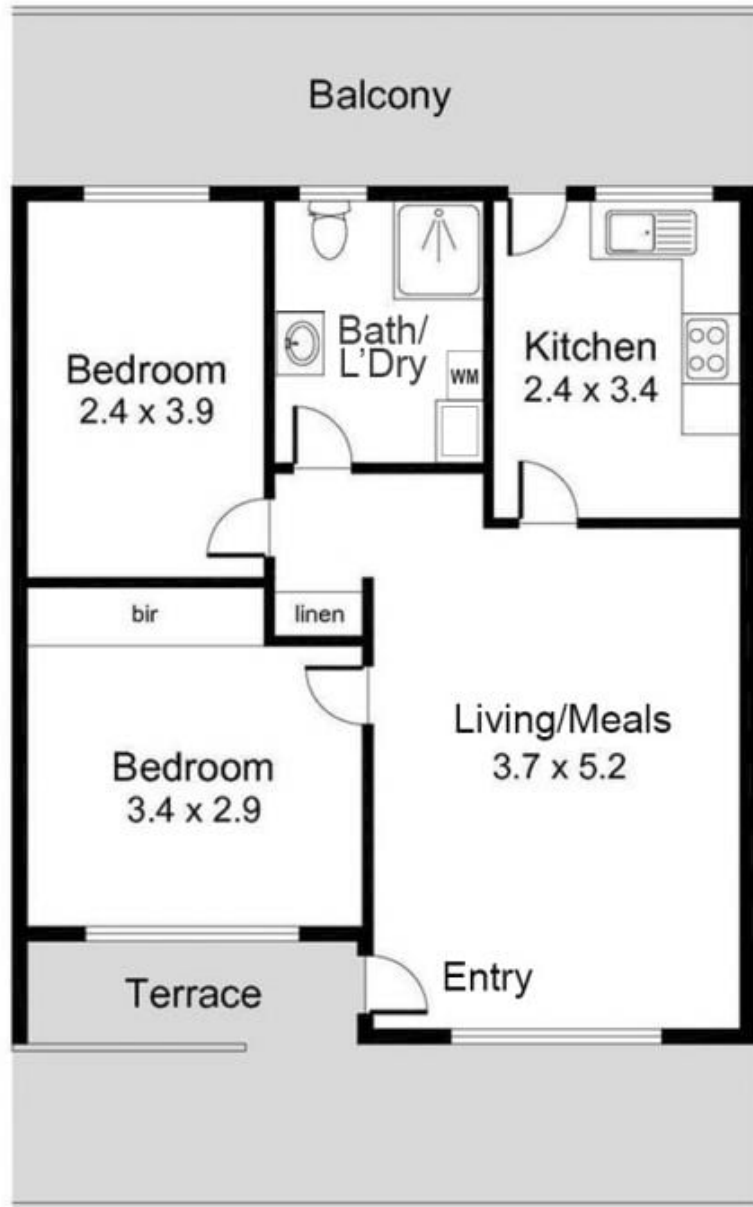
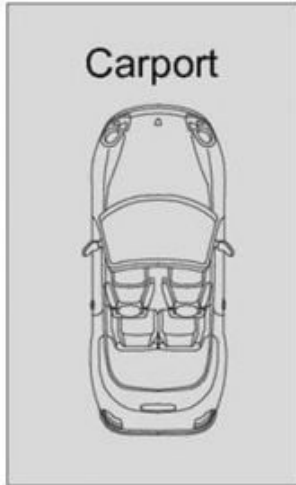
Marco Schinella
08 8294 4484



DeArna Schinella
08 8294 4484

[For full version visit the website](https://www.schinellaproperty.com.au)

<https://www.schinellaproperty.com.au>



62m²

UNIT

All measurements approximate. Drawing is for illustration purposes only.