




SCHINELLA.



40/4-8 Charles Street Adelaide SA

3  2  1 

A rare find- We are proud to present this executive three-bedroom apartment to the market.

Offering one of the very best city locations - Martin Towers - off North Terrace.

What a lifestyle this property offers, right in the heart of the CBD.

Perfectly positioned directly opposite some of the city's most historical buildings including the Museum and Art Gallery. This 4th floor apartment offers superb uninterrupted views all the way to the Adelaide oval and beyond.

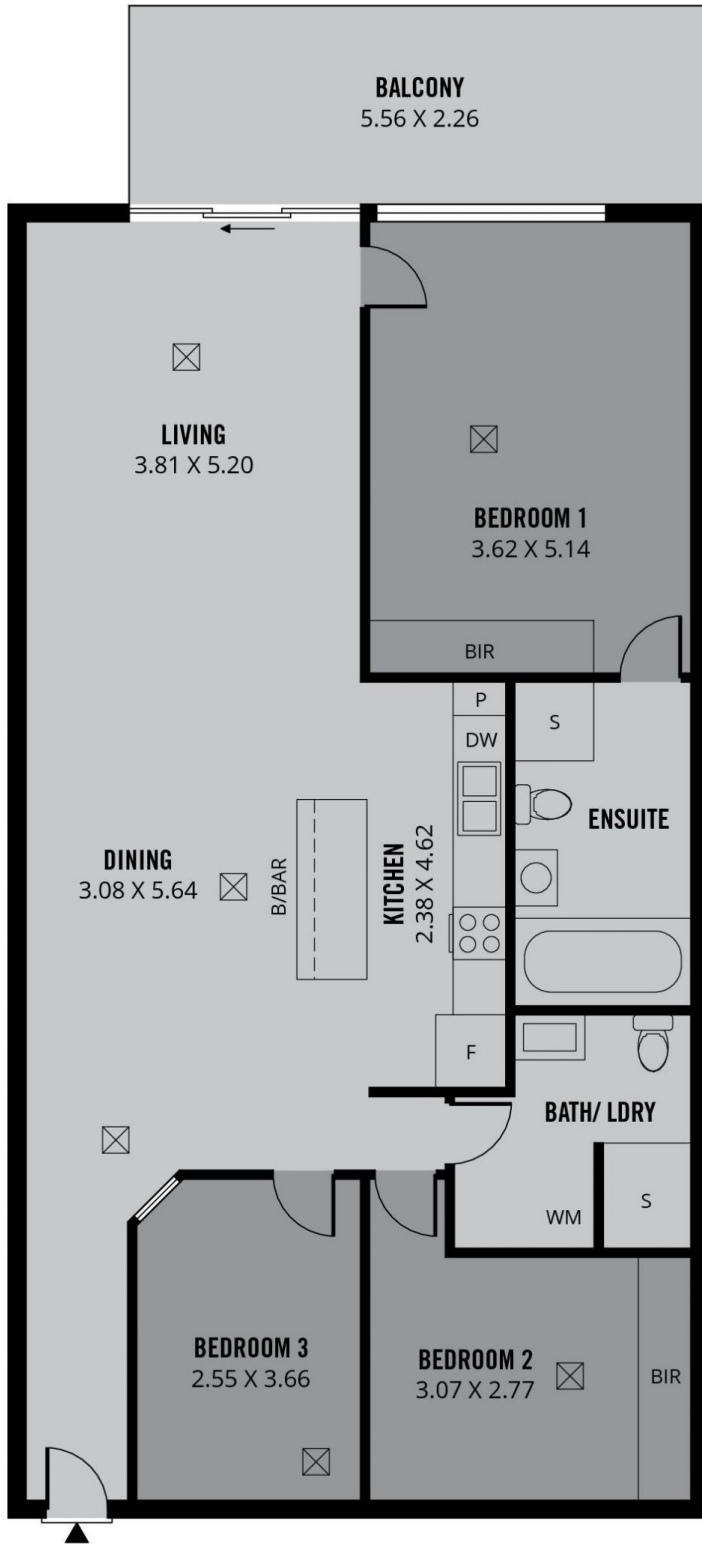
Shopping is at your fingertips with Rundle Mall mere steps

[For full version visit the website](https://www.schinellaproperty.com.au)

Type : Apartment
Price : \$ 862,000
Land Size : 97 sqm
View : <https://www.schinellaproperty.com.au/8000931>



Jennifer Wilson-Gage
08 8294 4484



NOT IN ACTUAL POSITION

145m²

TOTAL

119m²

Living

13m²

Balcony

13m²

Carpark



Scale in metres. This drawing is for illustration purposes only. All measurements are approximate and details intended to be relied upon should be independently verified.

Produced by **The Fotobase Group**