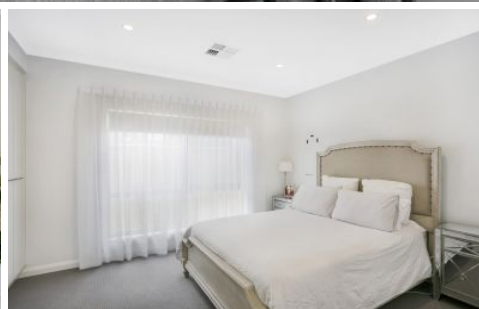


SCHINELLA.



20 Gulfview Parade Valley View SA

3 2 4

This well maintained, luxurious home is a delight to present and ticks all the "I want" boxes for sure. Located close to Ingle Farm and Gilles Plains Shopping Centre, St Pauls School and public transport which is an easy commute of 35 minutes to the city.

A welcoming Study, or second living area is upon entry to this light filled, well planned out house.

Featured down the hall way you will find the bedrooms, the Main room being more of a suite size with built in robes and a spacious en suite with double sink. The other two bedrooms have built in robes and are serviced by the main bathroom which is a three way layout, giving you an easier option so that all three areas can be used at once. A large bath with separate shower in the main section is great for

Type : House

View : <https://www.schinellaproperty.com.au/7996042>



Amanda Bebbington
(08) 8294 4484



Renee Jackson
8294 4484

[For full version visit the website](https://www.schinellaproperty.com.au)

<https://www.schinellaproperty.com.au>