

# SCHINELLA.



72A Castle Street South Plympton SA

3 2 2

Nestled within the popular and convenient neighborhood of South Plympton. Perfectly positioned between the city and the sea, this location offers an extraordinary lifestyle.

In a small group of three this home was built in 2015 and is loaded with extra features that have been thoughtfully added to make this house a home. It has been loved and very well cared for.

Offering a versatile floorplan that could be altered to suit your needs.

Entering through the oversized feature front door you find three generously proportioned bedrooms, a second living area offering the flexibility to be transformed into a fourth

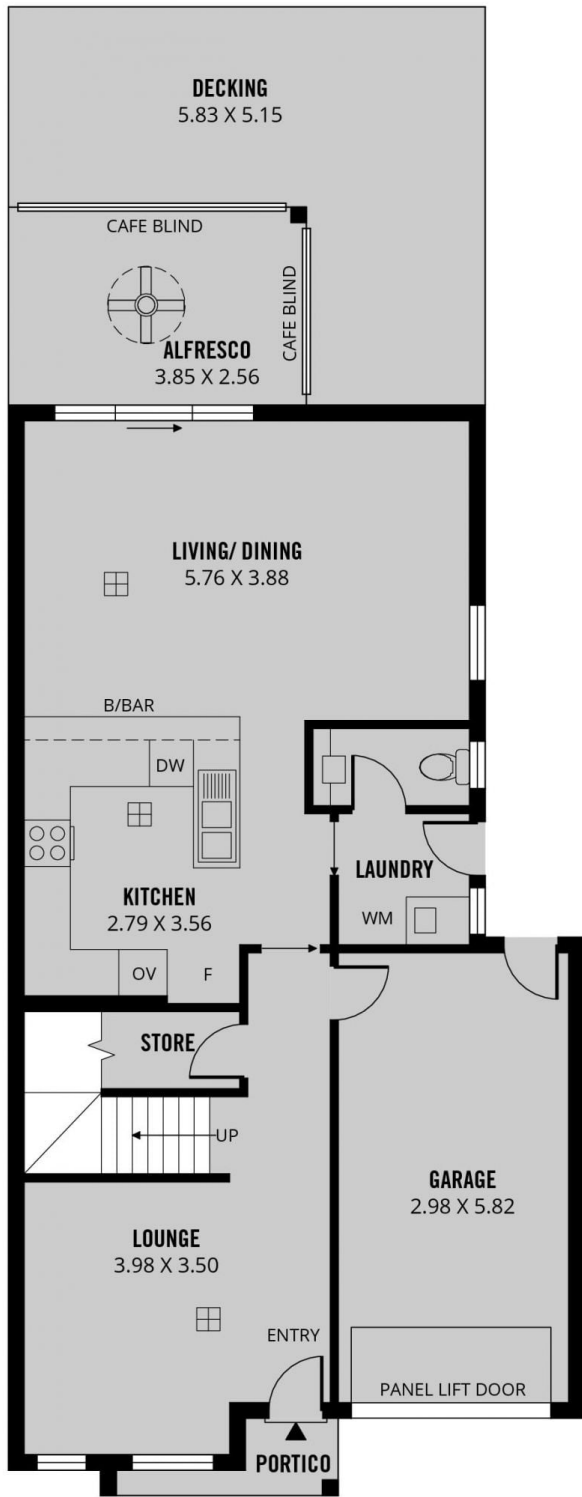
[For full version visit the website](https://www.schinellaproperty.com.au)

**Type** : House  
**Price** : \$ 850,000  
**Land Size** : 222 sqm  
**View** : <https://www.schinellaproperty.com.au/79656>  
86

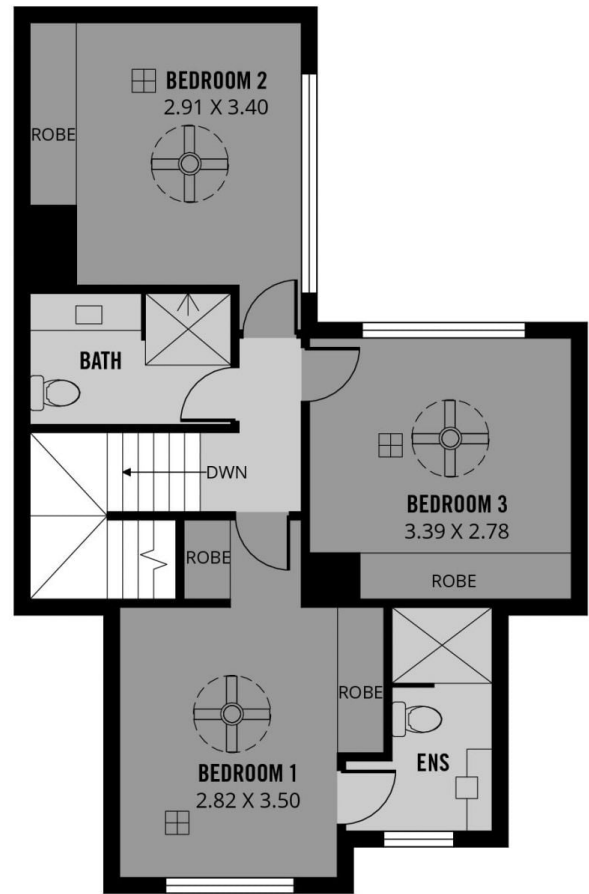


**Jennifer Wilson-Gage**  
08 8294 4484

<https://www.schinellaproperty.com.au>



**GROUND FLOOR**



**FIRST FLOOR**



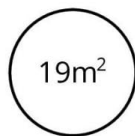
**TOTAL**



Living



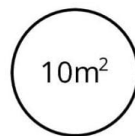
Decking



Garage



Portico



Alfresco



Scale in metres. This drawing is for illustration purposes only. All measurements are approximate and details intended to be relied upon should be independently verified.

Produced by **The Fotobase Group**