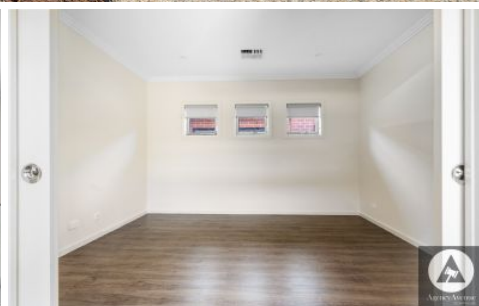


# SCHINELLA.



**24A Mitchell Street East Seaton SA**

3  2  2 

This immaculately presented home is ready to move straight into. A modern home offering a low-maintenance and easy-care lifestyle, it is perfect for busy professionals.

With the bonus of two-living areas, the spacious floorplan features an open-plan kitchen, dining with living area plus a central lounge room with double doors for added privacy. There are three bedrooms, bed two and three are complete with cosy carpet and built-in robes. The master suit includes a walk-in robe and ensuite with large shower recess.

The luxurious main bathroom provides a powder room, separate second toilet and large shower recess and full-length bath. Adjacent this space is the laundry with

**Type** : House

**View** : <https://www.schinellaproperty.com.au/7941894>



**Amanda Bebbington**  
**(08) 8294 4484**



**Renee Jackson**  
**8294 4484**

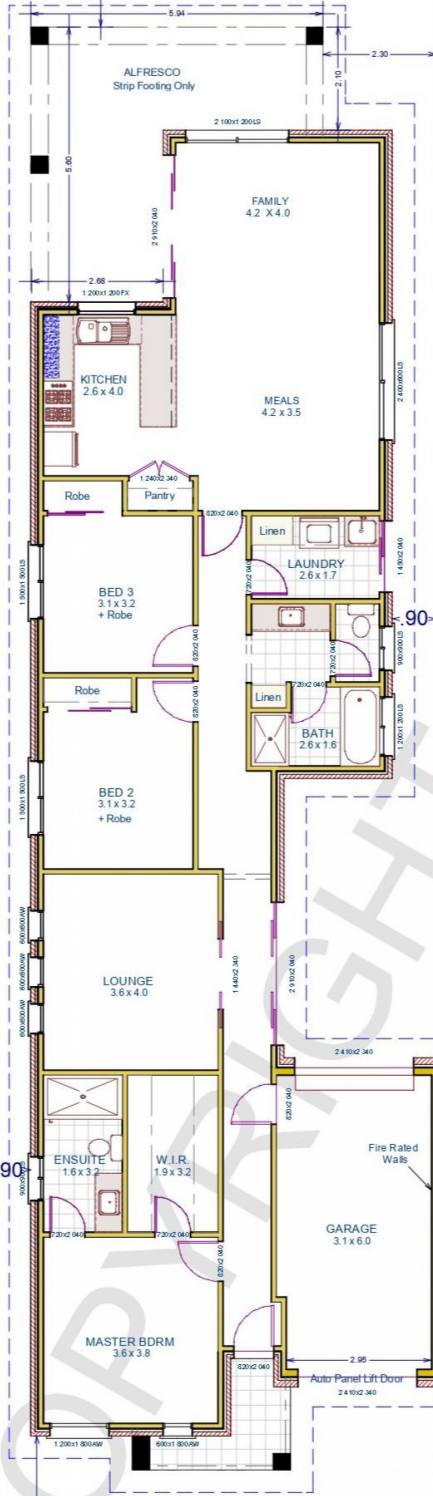
[For full version visit the website](https://www.schinellaproperty.com.au)

<https://www.schinellaproperty.com.au>

42.67

9.14

7.48



6.50