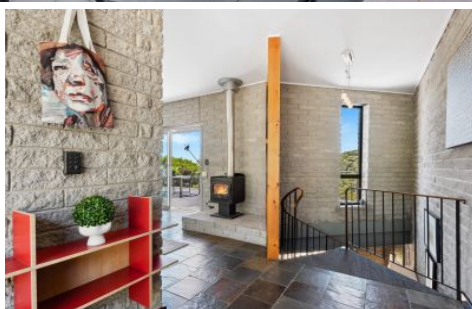


# SCHINELLA.



## 5 Vantage Way Crafers SA

4  2 

Perched high above the valley this tree top sanctuary has been a much loved home for many years and was designed to make the most of the stunning uninterrupted views.

This lovely home is set on a tranquil bush setting allotment of approx. 1635sqm. Perfectly located at the end of a quiet and peaceful cul-de-sac, far from the hustle and bustle of city life while still offering an easy commute into the CBD.

Originally constructed in 1984 this double brick spacious home is spread over two levels, comprising of 4 bedrooms, 2 bathrooms, 2 living/family areas, a well-sized kitchen, laundry and generous outdoor entertaining deck. A flexible floorplan to suit your family's needs.

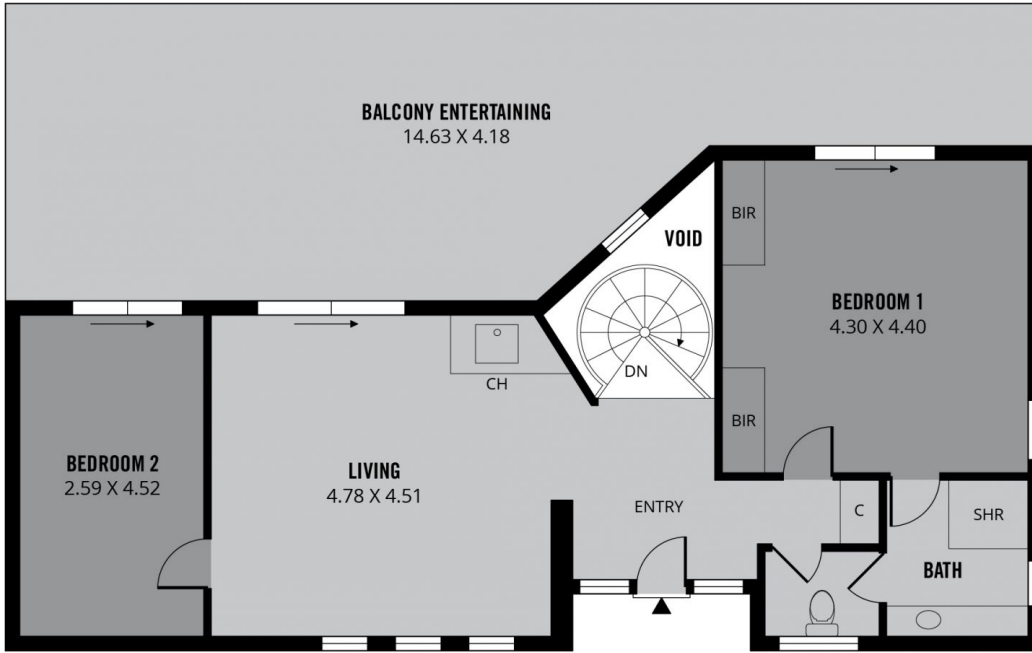
**Type** : House  
**Land Size** : 1635 sqm  
**View** : <https://www.schinellaproperty.com.au/7920610>



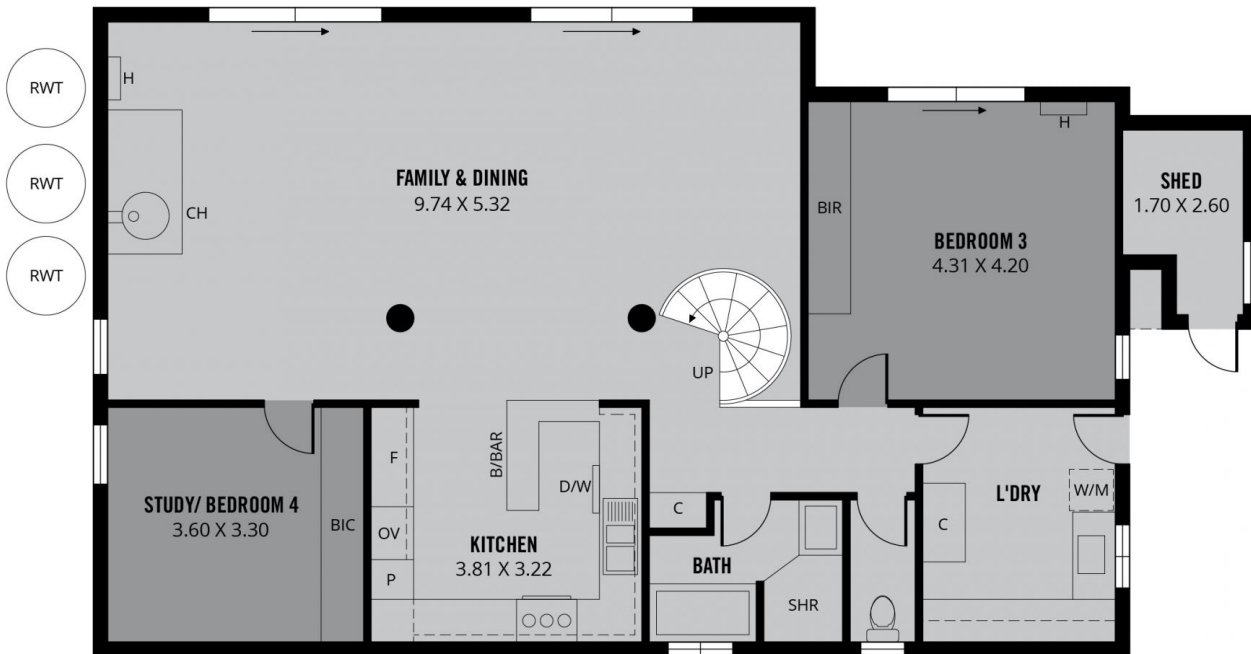
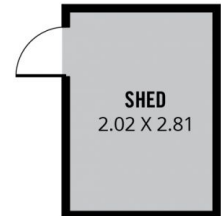
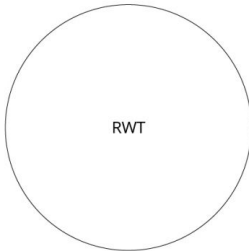
**Jennifer Wilson-Gage**  
08 8294 4484

[For full version visit the website](https://www.schinellaproperty.com.au)

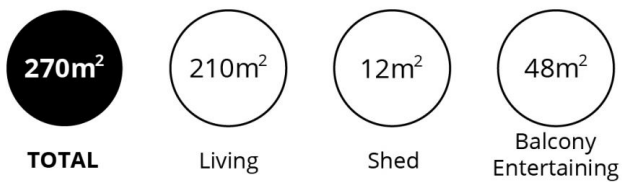
<https://www.schinellaproperty.com.au>



**GROUND FLOOR**



**LOWER FLOOR**



Scale in metres. This drawing is for illustration purposes only. All measurements are approximate and details intended to be relied upon should be independently verified.

Produced by **The Fotobase Group**