

SCHINELLA.



23A Jarman Terrace Flinders Park SA

3 2

Perfectly positioned just metres to Torrens Linear Park, this contemporary home offers stylish finishes and plenty of space for the family.

Featuring three bedrooms (main with built-in wardrobes and ensuite, bedrooms two and three with built-in robes), a formal lounge room providing that highly sought after second living area, and a centrally located family bathroom.

At the rear the kitchen overlooks the open plan living and dining area which in turn opens to the alfresco entertaining area - complete with pull-down cafe blinds it is perfect for entertaining all year round.

The lush gardens add colour and are low in maintenance

[For full version visit the website](https://www.schinellaproperty.com.au/79034)

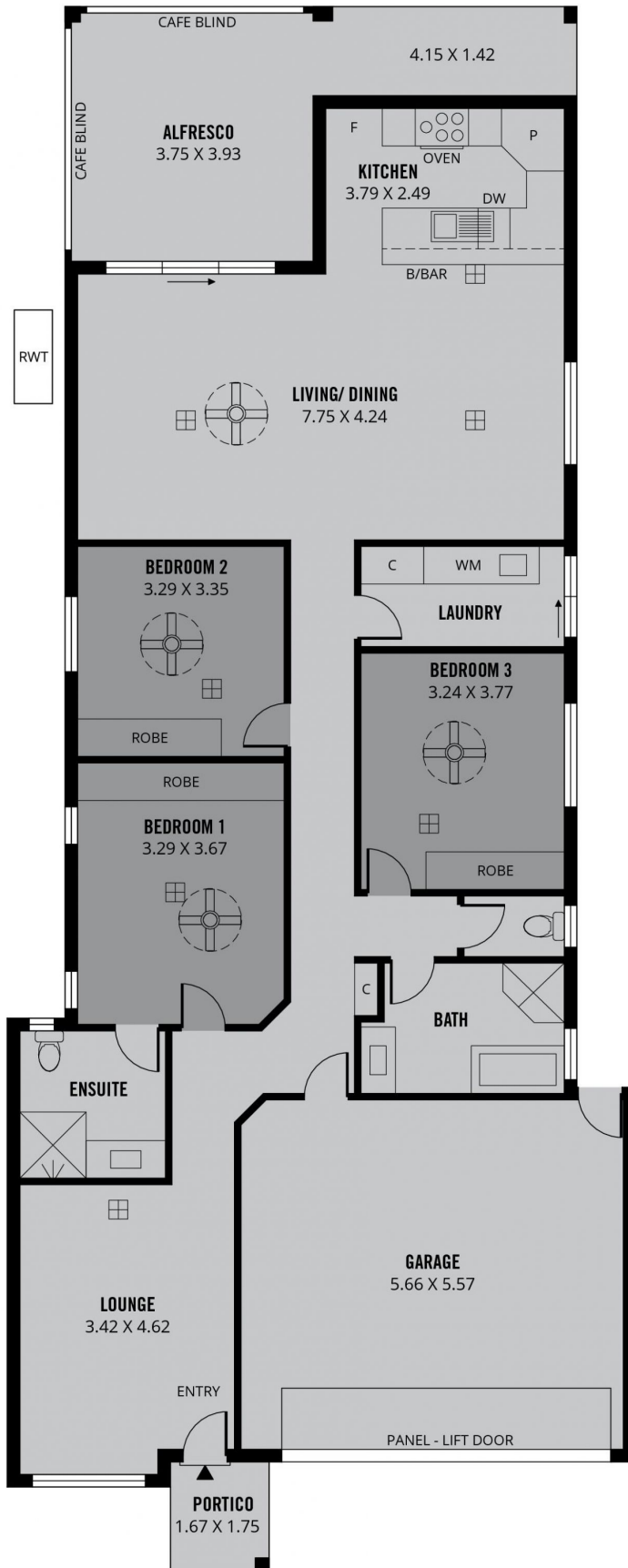
Type : House
Price : \$ 902,000
Land Size : 320 sqm
View : <https://www.schinellaproperty.com.au/79034>
59



Damian Popowycz
0413 026 026



Mladen Djuric
0432259123



204m²

TOTAL

144m²

Living

3m²

Portico

36m²

Garage

21m²

Alfresco



Scale in metres. This drawing is for illustration purposes only. All measurements are approximate and details intended to be relied upon should be independently verified. Produced by **The Fotobase Group**