

# SCHINELLA.



**8/1 Charles Street Plympton SA**

2  1  1 

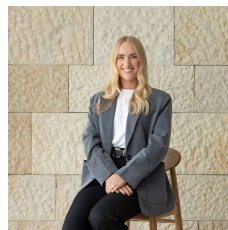
You certainly will not be disappointed with anything that this well presented two bedroom unit has to offer.

Centrally located in the highly sought after suburb of Plympton only 6kms from the city with public transport at your doorstep, with lovely beaches, shopping and cafe precinct of Glenelg, it is a perfect location for a cosmopolitan lifestyle.

This ground floor unit has been architecturally designed with quality fixtures and fittings. Electronic gates for easy parking where you have your own personal car park space within a few meters to your door. A locked pedestrian gate into the complex and lockable front gate to your own private courtyard makes this property very secure and safe.

**Type** : Unit

**View** : <https://www.schinellaproperty.com.au/7873729>



**Renee Jackson**  
8294 4484



**DeArna Schinella**  
08 8294 4484

[For full version visit the website](https://www.schinellaproperty.com.au)

<https://www.schinellaproperty.com.au>