

# SCHINELLA.



## 4 Hoylake Crescent West Lakes SA

3 2 2

The location is perfect - near the lake foreshore, Grange Golf Course, Westfield Shopping Centre, and Café precinct. This spacious home is in great condition and ready for families to move-in and enjoy.

Offering comfortable accommodation across a spacious floorplan with multiple areas - three bedrooms, two bathrooms and two living areas.

The master bedroom includes an ensuite and walk-in robe. Bedroom 2 and 3 provide built-in robes.

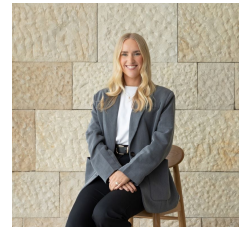
There is a spacious lounge with adjoining dining room, and large family room adjacent the solid kitchen. The kitchen includes quality SMEG appliances, walk-in pantry and plenty of bench and storage space. Split system A/C and

**Type** : House

**View** : <https://www.schinellaproperty.com.au/7861184>



**DeArna Schinella**  
08 8294 4484



**Renee Jackson**  
8294 4484

[For full version visit the website](https://www.schinellaproperty.com.au)

<https://www.schinellaproperty.com.au>



Scale in metres. This drawing is for illustration purposes only. All measurements are approximate and details intended to be relied upon should be independently verified.



Produced by The Fotebase Group