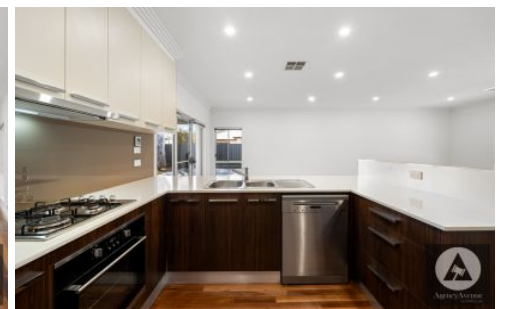


# SCHINELLA.



## 2A Pethick Terrace Marion SA

3  2  2 

This inviting family home ticks all the boxes. Close to public transport, Park Holme Shopping Precinct, quality schools and Marion outdoor swimming centre.

With impressive street presence, the entry leads into the spacious open-plan living with striking timber floors. The well-appointed kitchen includes; quality stone bench-tops, dishwasher, gas stove top with rangehood and oven. Outside features a paved courtyard with the expansive pitch-roof pergola and deck with shade blinds. This space is ideal for entraining friends and family all-year round.

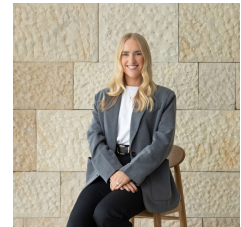
There are three bedrooms which includes an option for a work from home office if needed. The master bedroom includes walk-in robe and ensuite. The main bathroom

**Type** : House

**View** : <https://www.schinellaproperty.com.au/7808644>



**DeArna Schinella**  
08 8294 4484



**Renee Jackson**  
8294 4484

[For full version visit the website](https://www.schinellaproperty.com.au)

<https://www.schinellaproperty.com.au>