




# SCHINELLA.



15 Lyle Street Para Vista SA

3  2  2 

Positioned on an elevated allotment at the end of a culdesac, this home offers spacious, open plan living with room for the whole family. Perfectly presented throughout it is charming and light-filled and ready to enjoy as is, while offering scope to further enhance and add instant value.

With a wide, welcoming entrance, three bedrooms (main with ensuite and walk-in wardrobe and bedrooms 2 and 3 with built-in robes), main bathroom, and a central formal lounge room - that second living space so crucial for comfortable family living.

At the rear, the bright kitchen overlooks the open-plan living and dining area which in turn opens to the undercover outdoor entertaining area - ideal for combining your indoor and outdoor celebrations.

The paved yard is low maintenance while still offering

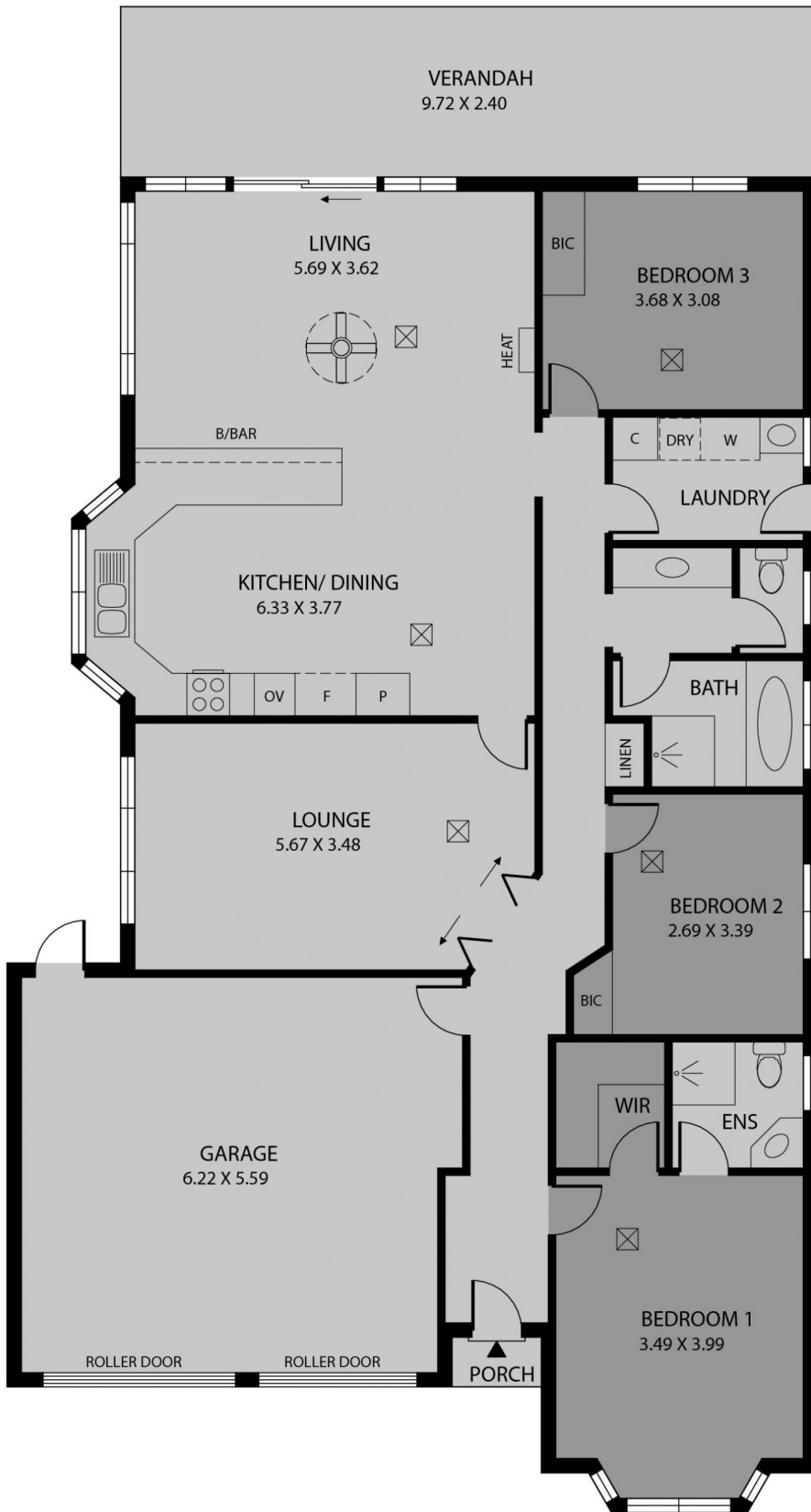
**Type** : House  
**Price** : \$ 657,000  
**Land Size** : 400 sqm  
**View** : <https://www.schinellaproperty.com.au/77984>  
42



**Damian Popowycz**  
0413 026 026

[For full version visit the website](https://www.schinellaproperty.com.au)

<https://www.schinellaproperty.com.au>



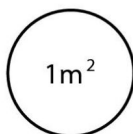
RWT  
APPROX. LOCATION



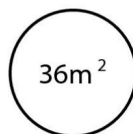
**TOTAL**



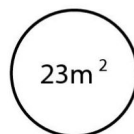
Living



Porch



Garage



Verandah



Scale in metres. This drawing is for illustration purposes only. All measurements are approximate and details intended to be relied upon should be independently verified.

Produced by **The Fotobase Group**