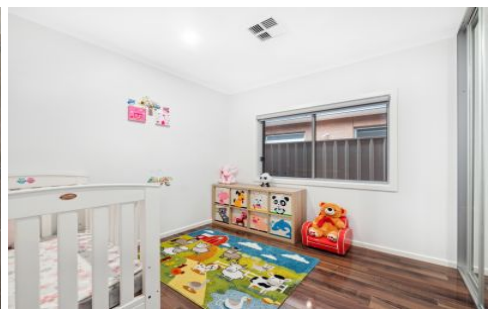


SCHINELLA.



10 Dover Street Royal Park SA

3  2  2 

Immaculately presented from front to back, this contemporary courtyard residence offers all the comforts of modern living in a convenient and popular location.

Surrounded by quality homes, a short walk to local shops and cafes and a short drive to Westfield West Lakes, this is the ideal first home, investment, and perfect for those looking for spacious low-maintenance living.

Featuring three bedrooms (main with walk-in wardrobe and ensuite, bedrooms two and three with built-in wardrobes), separate study, and a bright kitchen overlooking an open-plan living and dining area which in turn opens to the outdoor alfresco - perfect for combining your indoor and outdoor entertaining. The well maintained yard with fruit trees offers a peaceful space to enjoy the afternoon sun while relaxing with family and friends.

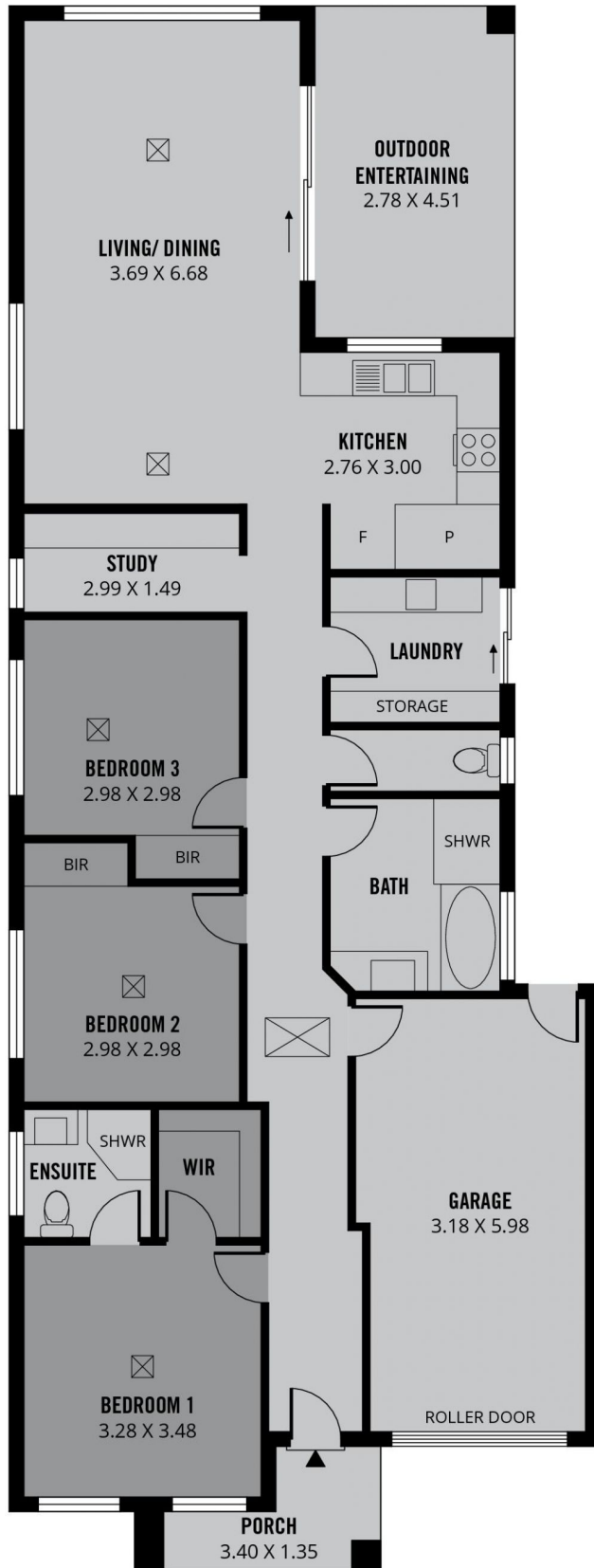
Type : House
Price : \$ 723,000
Land Size : 280 sqm
View : <https://www.schinellaproperty.com.au/77222>
14



Damian Popowycz
0413 026 026

[For full version visit the website](https://www.schinellaproperty.com.au)

<https://www.schinellaproperty.com.au>



154m²

TOTAL

116m²

Living

4m²

Porch

21m²

Garage

13m²

Outdoor
Entertaining



Scale in metres. This drawing is for illustration purposes only. All measurements are approximate and details intended to be relied upon should be independently verified. Produced by **The Fotobase Group**