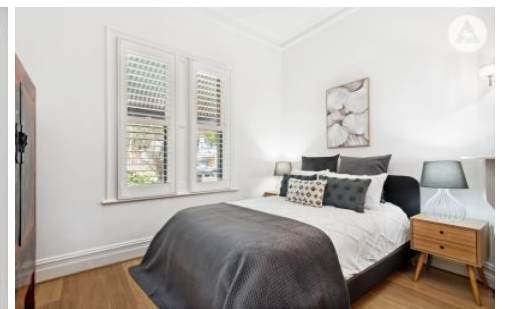


SCHINELLA.



16 Fairford Street Unley SA

3  1  2 

With charming street appeal this gorgeous sandstone fronted cottage is nestled perfectly amongst other beautiful homes in the ever-popular suburb of Unley.

Built in approx. 1910 this sweet cottage is a fabulous combination of old and new, with all the traditional features including high ornate ceilings and fireplaces.

Upon entering you are greeted into a gallery styled hall, with skylight to invite in the natural light. Lovely neutral toned floating floors flow throughout the home.

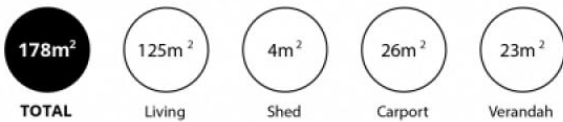
All 3 bedrooms accessed by the central hallway. The size will surprise you with the impressively large rooms. This property has been extended to include a modern kitchen,

[For full version visit the website](https://www.schinellaproperty.com.au/7721609)

Type : House
Price : \$ 1,020,000
Land Size : 258 sqm
View : <https://www.schinellaproperty.com.au/7721609>



Jennifer Wilson-Gage
08 8294 4484



Scale in metres. This drawing is for illustration purposes only. All measurements are approximate and details intended to be relied upon should be independently verified.

Produced by **The Fotobase Group**