

SCHINELLA.



30a Olympia Street Kidman Park SA

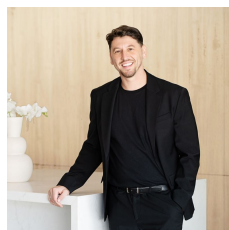
4 3 4

Warm, inviting, built with quality and care in mind, this c2015 Torrens titled courtyard provides an expansive, comfortable dual level home fitted with all of today's necessities and more. Situated at the end of a cul-de-sac, ideal upgrade in size for a growing established family looking for peace and quiet while still being close to most of Adelaide's hot spots.

Key features:

- Open plan kitchen / living / dining and seamless entry into the alfresco offering comfortable spaces for quality family time.
- Simple and elegant homemaker's kitchen features stainless steel Smeg appliances, Caesarstone benches, gas cooking, plenty of cupboard/draw space as well as a

Type : House
Land Size : 316 sqm
View : <https://www.schinellaproperty.com.au/76897>
97



Mladen Djuric
0432259123



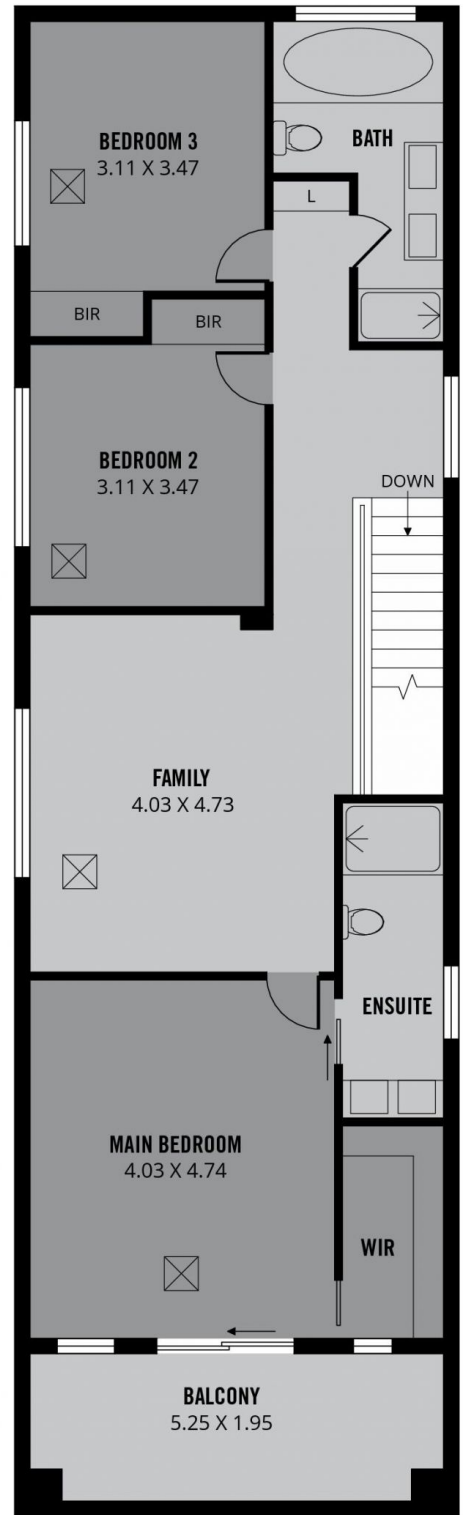
Damian Popowycz
0413 026 026

[For full version visit the website](https://www.schinellaproperty.com.au)

<https://www.schinellaproperty.com.au>



GROUND FLOOR



FIRST FLOOR



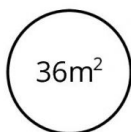
TOTAL



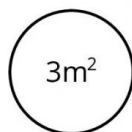
Living



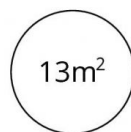
Alfresco



Double
Garage



Porch



Balcony



Scale in metres. This drawing is for illustration purposes only. All measurements are approximate and details intended to be relied upon should be independently verified.

Produced by **The Fotobase Group**