




# SCHINELLA.



**15A Scott Street Osborne SA**

**3**  **2**  **2** 

Beautifully presented from front to back, this contemporary home offers easy care living with plenty of space for the whole family.

With three bedrooms (main with ensuite and walk-in wardrobe, bedrooms 2 and 3 with built-in robes) plus that highly sought after second living space so crucial for comfortable family living.

At the rear the hallway opens to the sparkling kitchen with stainless steel appliances (including dishwasher), which overlooks the large open plan living and dining area. This space is the hub of the home and seamlessly opens to the outdoor alfresco area with its built-in kitchen/BBQ - perfect for combining your indoor and outdoor entertaining, and a

**Type** : House  
**Price** : \$ 657,000  
**View** : <https://www.schinellaproperty.com.au/7650413>



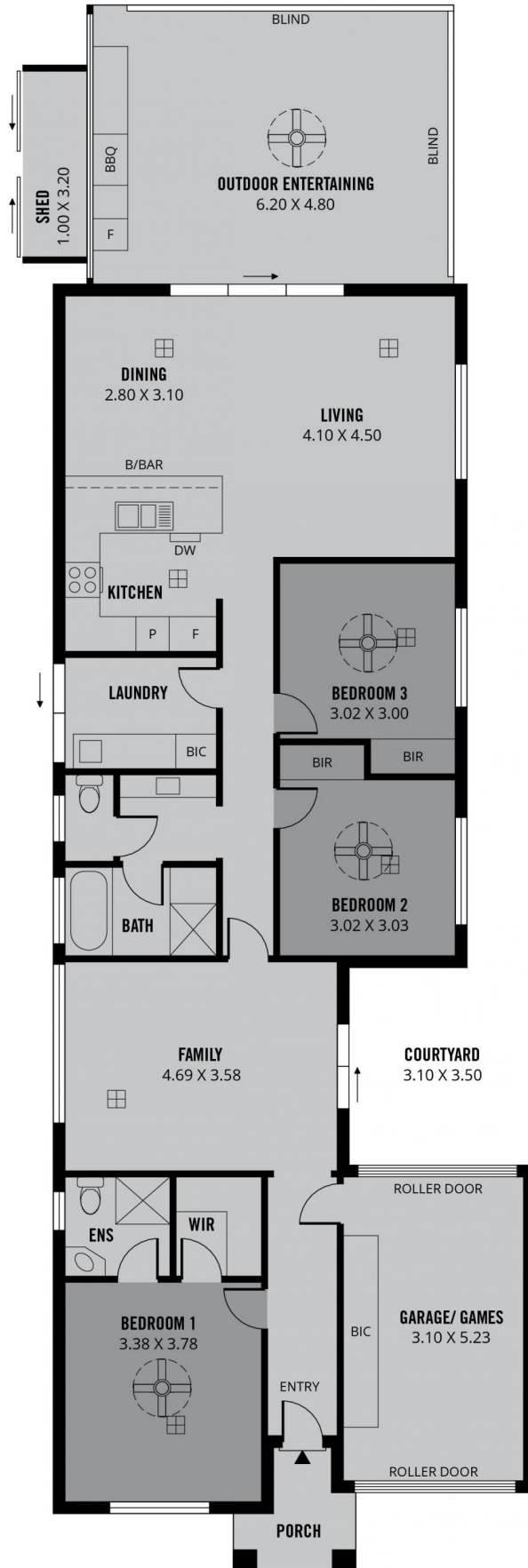
**Damian Popowycz**  
**0413 026 026**



**Mick Mehicic**  
**0412452262**

[For full version visit the website](https://www.schinellaproperty.com.au)

<https://www.schinellaproperty.com.au>



**185m<sup>2</sup>**

**TOTAL**

129m<sup>2</sup>

Living

4m<sup>2</sup>

Shed

19m<sup>2</sup>

Garage/  
Games

3m<sup>2</sup>

Porch

30m<sup>2</sup>

Outdoor  
Entertaining



Scale in metres. This drawing is for illustration purposes only. All measurements are approximate and details intended to be relied upon should be independently verified.

Produced by **The Fotobase Group**