
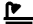



SCHINELLA.



111b May Terrace Ottoway SA

3  2  2 

Nestled in the end of a Community Titled group of two, this 2019 built courtyard home offers an ideal low maintenance modern lifestyle. Private and secure, filled with an array of quality fixtures and finishes, this home is sure to appeal to first home buyers, couples & small families as well as downsizers looking to upgrade their home without all the upkeep.

With the cost of building on the rise and uncertain completion dates, save the headaches with this near-new courtyard solution.

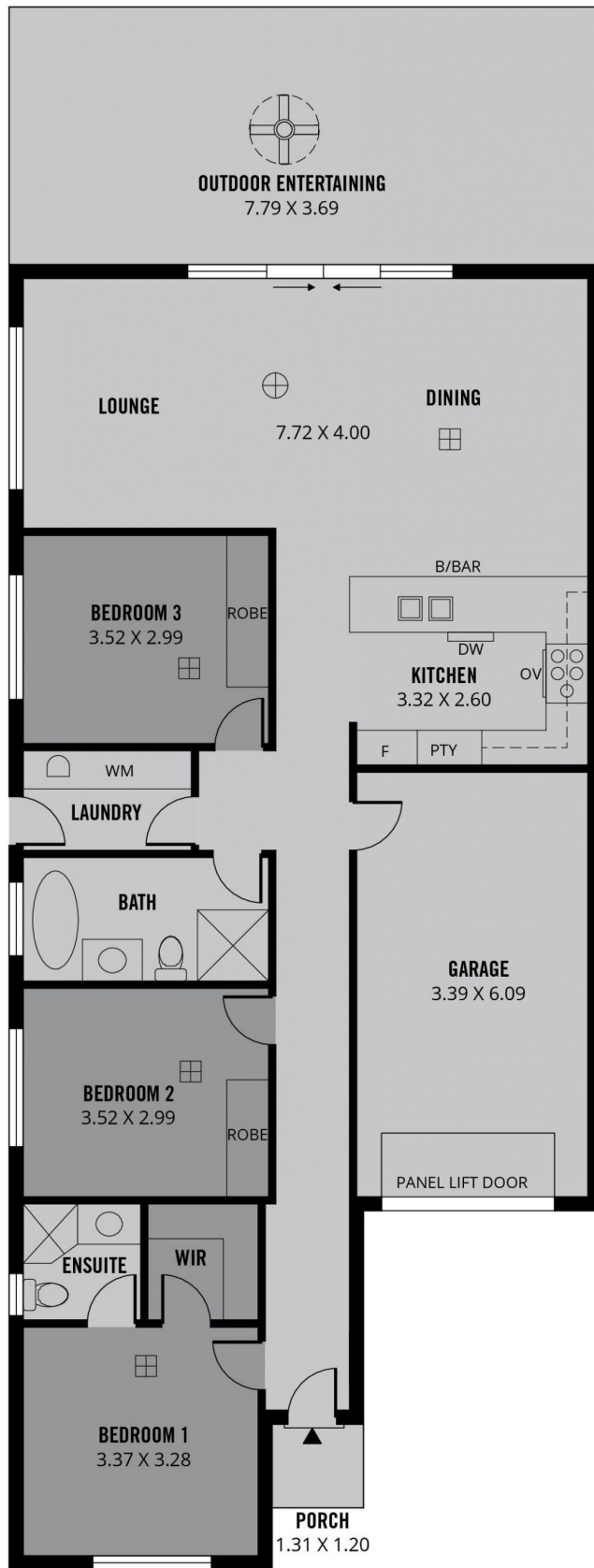
Only a 5% deposit required through the First Home Guarantee Scheme (Check NHFIC.gov for eligibility and speak to your Lender)

[For full version visit the website](https://www.schinellaproperty.com.au/76439)

Type : House
Price : \$ 606,000
Land Size : 226 sqm
View : <https://www.schinellaproperty.com.au/76439>
82



Mladen Djuric
0432259123



170m²

TOTAL

117m²

Living

29m²

Outdoor
Entertaining

22m²

Garage

2m²

Porch



Scale in metres. This drawing is for illustration purposes only. All measurements are approximate and details intended to be relied upon should be independently verified. Produced by **The Fotobase Group**