

SCHINELLA.



9 Lucerne Grove Findon SA

3 2 2

Refreshingly different, with a gorgeous stone facade that oozes character, this home offers something for everyone - be it the first home buyer, investor or downsizer.

Featuring three bedrooms (master with walk-in wardrobe and ensuite, bedrooms 2 and 3 with built-in robes), bright family bathroom with separate WC, and laundry with direct external access.

The rear of the home is all about living and entertaining. The bright kitchen with dishwasher overlooks the extra-large, open plan living and dining space. Fully tiled for easy maintenance it is ideal for the largest gatherings of family and friends, and opens directly onto the rear verandah and outdoor entertaining zone.

The garage has an auto door and it offers drive through access to a second undercover outdoor area, or secure

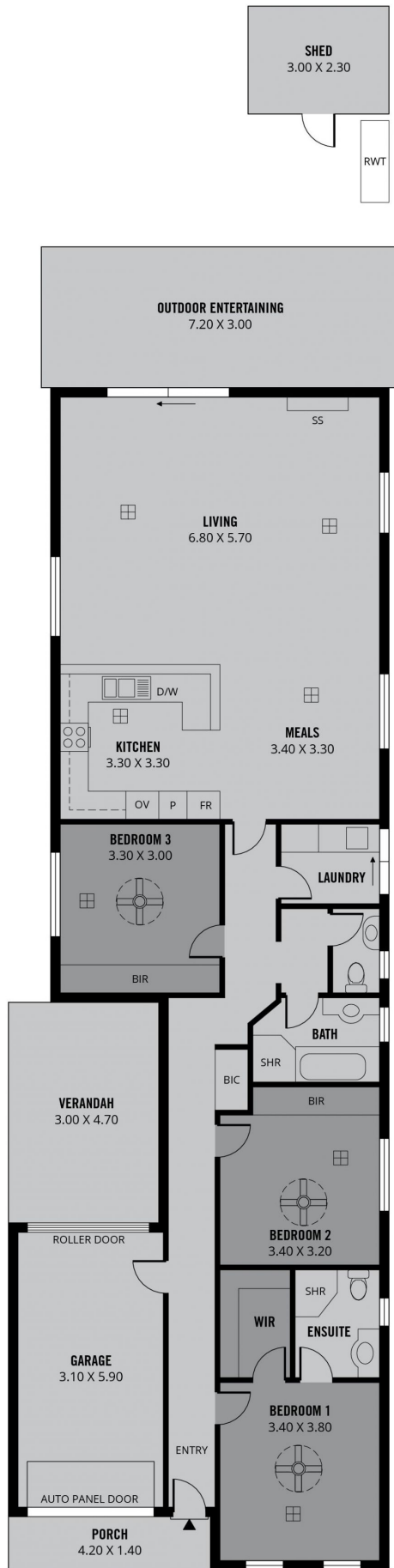
Type : House
Price : \$ 775,000
Land Size : 404 sqm
View : <https://www.schinellaproperty.com.au/7641671>



Damian Popowycz
0413 026 026

[For full version visit the website](https://www.schinellaproperty.com.au)

<https://www.schinellaproperty.com.au>



222m²
TOTAL

152m²
Living

7m²
Shed

21m²
Garage

20m²
Porch/
Verandah

22m²
Outdoor
Entertaining



Scale in metres. This drawing is for illustration purposes only. All measurements are approximate and details intended to be relied upon should be independently verified.

Produced by **The Fotobase Group**