

SCHINELLA.



60 Solandra Crescent Modbury North SA

3 2 3

With a commanding street presence, this large, solid brick family home offers spacious rooms and multiple indoor and outdoor living areas. Ready to move right in while offering loads of potential to update to taste to create your perfect family space.

Ideal for families who want room to move and entertain, the home has three bedrooms (oversized master with built-in wardrobes and ensuite), large open plan living and dining, solid timber kitchen with adjacent casual meals area, plus an additional study or family room providing that highly sought after retreat or second living space so crucial for comfortable family living.

The extensive outdoor undercover entertaining space is ideal for large gatherings of family and friends and offers hills views over the trees.

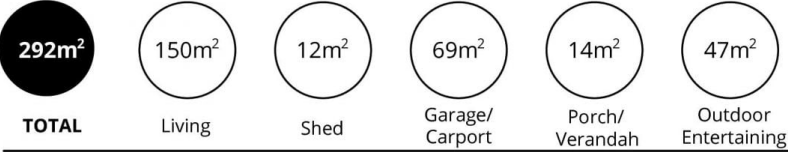
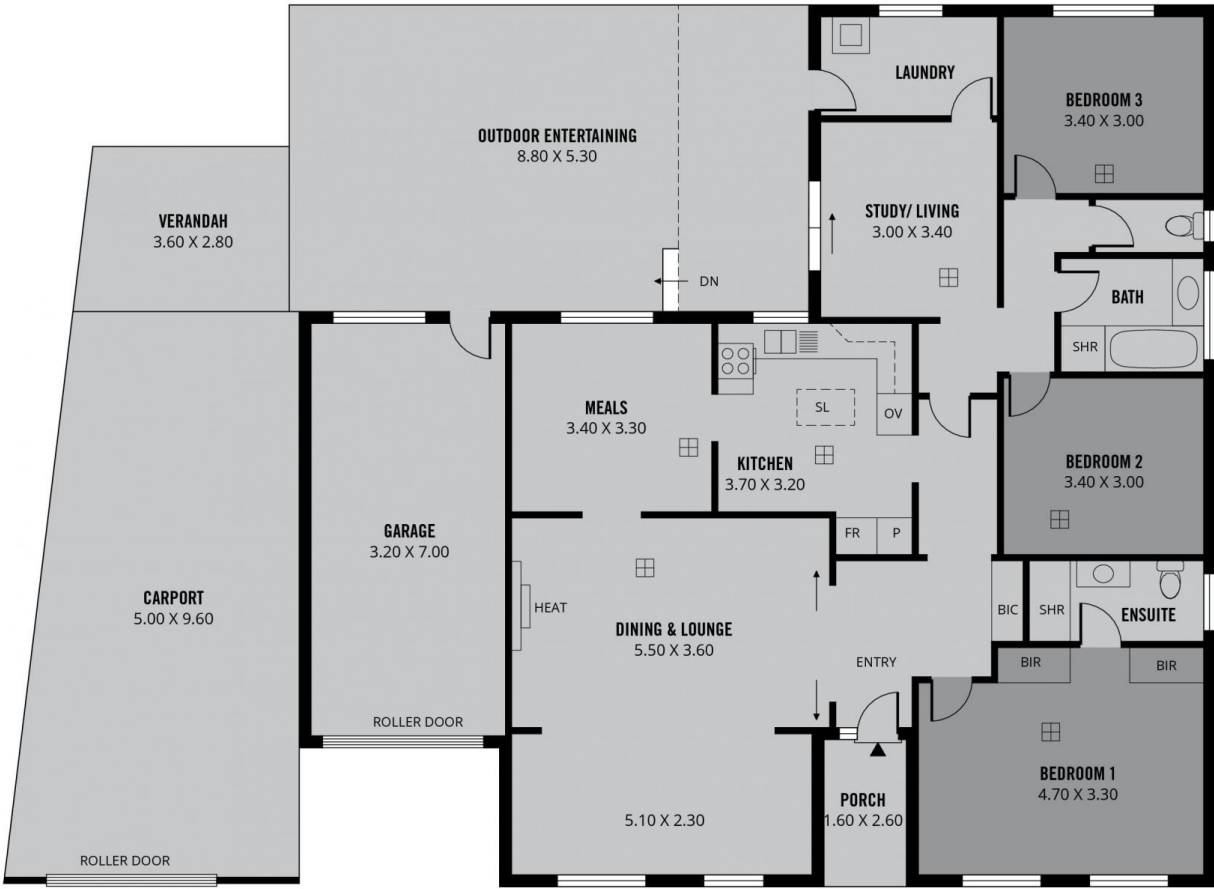
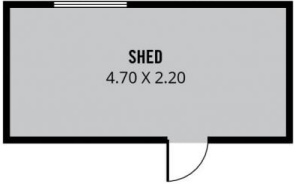
Type : House
Price : \$ 698,000
Land Size : 665 sqm
View : <https://www.schinellaproperty.com.au/7620069>



Damian Popowycz
0413 026 026

[For full version visit the website](https://www.schinellaproperty.com.au)

<https://www.schinellaproperty.com.au>



Scale in metres. This drawing is for illustration purposes only. All measurements are approximate and details intended to be relied upon should be independently verified.

Produced by The Fotobase Group