

SCHINELLA.



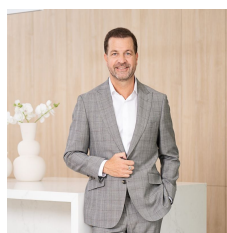
6b Jarman Terrace Flinders Park SA

3 2 2

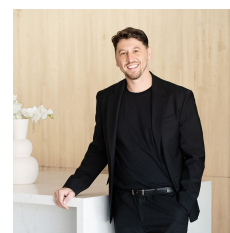
Elegance and style fuse together effortlessly in this brand new residence perfectly positioned just metres to Torrens Linear Park. Enjoy river walks to the city or the sea and take advantage of the boundless amenities on offer in this ever popular location.

This dual level residence offers multiple living spaces and open entertaining areas, both inside and out. The lower level features a large entry hall, two bedrooms (both with built-in wardrobes), luxurious family bathroom, and a large under-stair storage room or wine cellar. The bright kitchen with stone benchtops and picture-window splashback has a butler's pantry, deluxe hands-free tap, gas cooktops and dishwasher, and overlooks the open plan living and dining area. This area

Type : House
Price : \$ 1,040,000
View : <https://www.schinellaproperty.com.au/7613731>



Damian Popowycz
0413 026 026



Mladen Djuric
0432259123

[For full version visit the website](https://www.schinellaproperty.com.au)

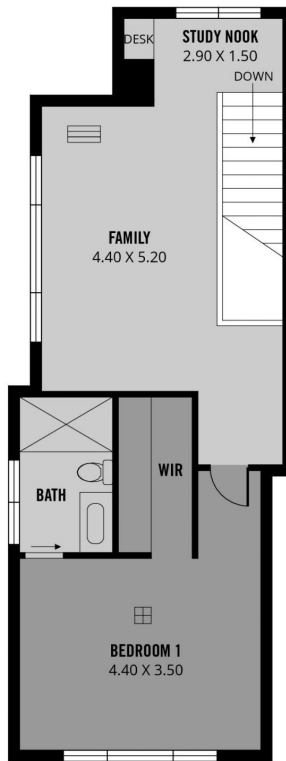
<https://www.schinellaproperty.com.au>



(NOT IN ACTUAL LOCATION)



LOWER LEVEL



UPPER LEVEL

250m²

TOTAL

188m²

Living

8m²

Porch

38m²

Garage

16m²

Outdoor
Entertaining Area



Scale in metres. This drawing is for illustration purposes only. All measurements are approximate and details intended to be relied upon should be independently verified.

Produced by The Fotobase Group