

# SCHINELLA.



## 2A Winston Crescent Glengowrie SA

3 1 3

We are excited to present this much-loved family home to the market for the first time in many years. The pride and joy of its proud owners, this home holds years of treasured memories of parties and gatherings.

Perfectly positioned amongst other beautifully kept homes is the ever-popular Glengowrie, where you have everything at your fingertips. Walk to the Glenelg shopping and entertainment precinct, and of course the golden sands of Glenelg beach. Minutes away from the Tram for an easy commute to the CBD.

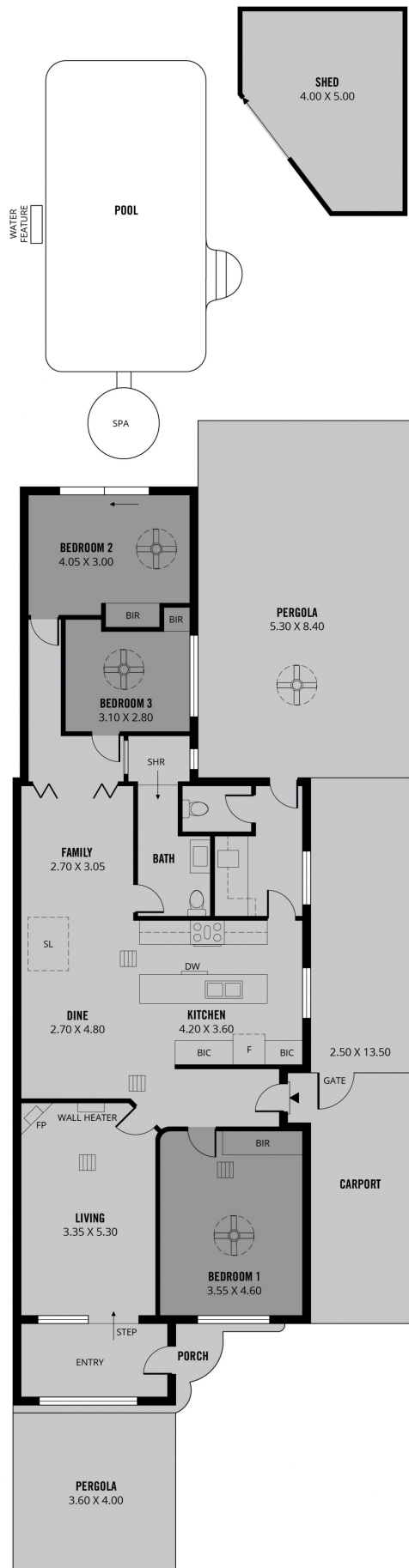
This lovely character home was built in 1940 and graces stunning lofty ceilings and traditional ornate details. Over the years this home has undergone many transformations

[For full version visit the website](https://www.schinellaproperty.com.au/75960)

**Type** : House  
**Price** : \$ 880,000  
**Land Size** : 482 sqm  
**View** : <https://www.schinellaproperty.com.au/75960>  
87



**Jennifer Wilson-Gage**  
08 8294 4484



255m<sup>2</sup>

TOTAL

140m<sup>2</sup>

Living

3m<sup>2</sup>

Porch

59m<sup>2</sup>

Pergola

35m<sup>2</sup>

Carport

18m<sup>2</sup>

Shed



Scale in metres. This drawing is for illustration purposes only. All measurements are approximate and details intended to be relied upon should be independently verified. Produced by **The Fotobase Group**